



CRETE AT ITS PRIME



# MARINE PALACE & AQUA PARK

GRECOTEL ALL IN LIFESTYLE RESORT



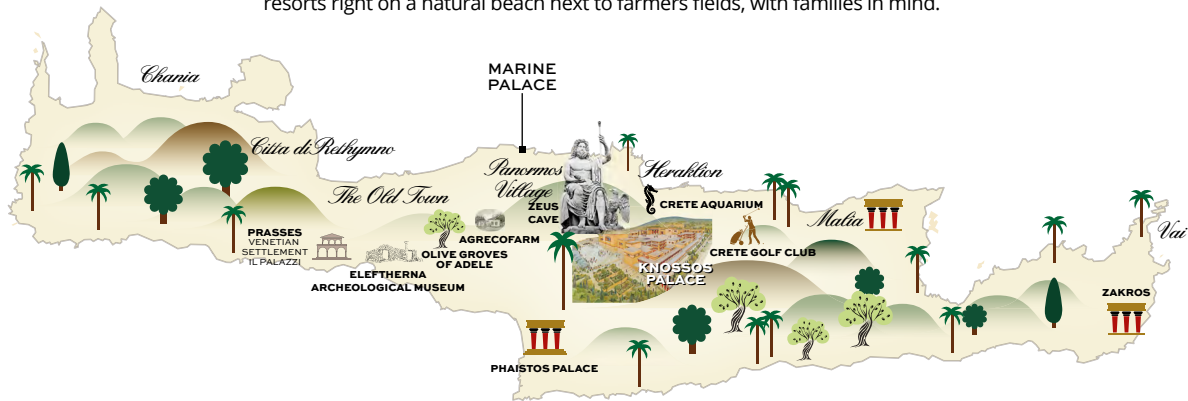
## A GREEK-SUMMER PARADISE FOR FAMILIES

Enjoy all-inclusive luxury vacations at the revamped Marine Palace. Created as a seaside village-style resort in Crete with traditional neighbourhoods, gardens, shops, restaurants and a superb Aqua Park, it promises unlimited fun!

# MARINE PALACE & AQUA PARK

GRECOTEL ALL IN LIFESTYLE RESORT

GrecoTel Hotels & Resorts is delighted to invite you to its "Lifestyle All-Inclusive Resorts", village style resorts right on a natural beach next to farmers fields, with families in mind.



## IDEAL FOR

Families

### NEWS 2026

An inspiring renovation throughout the premises. **New** rooms & bungalows, **new** bathrooms with showers, remodelled family accommodation. Revamped restaurant & bars highlighting, including the **new** Kafeneio – traditional coffee house. Mediterranean flavors, local Cretan cuisine and a Souvlaki Kingdom! A **new** Fitness Center & Spa.

## LOCATION

On a sandy bay next to Panormo, a traditional fishing village • Rethymnon town: 25km • Heraklion Airport: 59km • Chania Airport: 86km

## ACCOMMODATION

Total Rooms 419 • Rooms 101 • Bungalows 254 • Suites 64

## BEACH & POOLS

- On a sandy and Blue Flag awarded beach • 1 Panorama Lagoon Fresh water Pool • 1 Fresh water Garden Pool at Casa Marina Suites
- 1 Children's Fresh water Paddling Pool • 1 Tropical Exotic Beachfront Seawater Pool • 1 seafront Marin Bay pool (heated Apr – mid May & Oct – Nov) • 1 Heated Seawater Indoor Pool

## FEATURES

**New** 75m<sup>2</sup> Elixir Spa with Aqua Elixir Indoor Pool • 5 Restaurants, Dine Out Experience & 6 Bars • 6.000 m<sup>2</sup> Aqua Park "Kingdom of Poseidon" • Greco- and Kids Club • Amphitheatre • Conference facilities for up to 260 people

## AWARDS

• HACCP • RCI Gold Crown • TUI Family Champion 2020 • TUV Austria Hellas - ISO 10002: 2014 - Quality Management Guidelines for Customer Satisfaction and Complaint Management • Travelife Gold for Sustainability in tourism • Holiday Check Award 2025 by Holiday Check reviewers • Blue Flag Beach 2021 by European Union • Travelers' Choice Awards 2025 by Tripadvisor • Green & Fair Hotel 2023 by TUI

## MEAL PLAN

**All Inclusive** A lifestyle all-inclusive concept with families in mind, including lavish breakfast, lunch and dinner, Greek and international dishes, snacks, ice cream, alcoholic and soft drinks, hot and cold beverages, as well as beer and wine served at lunch and dinner.

## UNLIMITED DINING

### BREAKFAST

American Buffet with fitness food corner and local corner with traditional products at the "Marine Palace Restaurant" (hotel's main restaurant) 07:15 - 10:30 hrs. Late Continental Breakfast available. Also, at the "Trattoria di Casa Marina" restaurant & "Big Blue" Greek Taverna 08:00 - 10:00 hrs, (high season and weather permitting).

## LUNCH

Self-service Buffet in the "Marine Palace Restaurant" 12:30 - 14:30 hrs and at the "Big Blue" Greek Taverna with hot Main Courses, Desserts and Live Cooking Show 12:30 - 14:30 hrs (High season & weather permitting). Street food, salads and snacks at the "Marin Bay Club" 11:30 - 17:30 hrs (High season & weather permitting). Wine, beer, water and refreshments are all free of charge.

## DINNER

Self-service Buffet at the "Marine Palace Restaurant" with cold & hot starters, soup, salads, main courses, variety of cheese and desserts & Live cooking shows. 18:30 - 21:30 hrs. Thematic dining at the Asian "Marin Bay Club", at the Italian "Trattoria di Casa Marina" restaurant, at the "Big Blue" Greek Taverna and a Barbeque by the sea option, the "Antikristo Traditional", Dine Out Experience in a selected Greek Taverna. 19:00 - 21:00 hrs (selected days, high season and weather permitting, table reservations necessary). Wine, beer, water and refreshments are all free of charge. Weekly theme evenings at no extra cost.

## SNACKS

At selected hours & bars during the day, Midnight Snacks.

## COFFEE & DESSERTS

Served at the Bars (cakes at selected hours).

## UNLIMITED DRINKS

International labels and local alcoholic and non-alcoholic drinks from 09.00 - 24:00 hrs.

## KIDS DINING

At the main Restaurant, during the Breakfast, Lunch and Dinner service hours. The special kids buffet offers a constant supply of fresh, tempting food and drinks exclusively for our little guests!

**Note:** Thematic restaurants are subject to availability and weather conditions. Reservations required. A choice of one (out of five) à la carte per weekly stay is free of charge. Free of charge drinks: Bottled local Wine, Beer, Water and Soft Drinks.

## RESTAURANTS & BARS

**Marine Palace Restaurant, Main Restaurant** All Day International Restaurant. Full buffet with grill station & show cooking with various theme evenings, "Tasty Corner" Children's buffet, Baby food. **B, L, D**

**Marin Bay Club** Asian-inspired eatery with creative Oriental & International cuisine. **L, D**

**Trattoria Di Casa Marina** A poolside Italian restaurant serving up a mouthwatering selection of Mediterranean dishes. **B, D**

**Big Blue Greek Taverna** Greek Taverna experience with local and traditional Cretan mountain specialties. **B, L, D**

**Souvlaki Kingdom** Snack Point at the Sea Front Marin Bay Pool. **L**

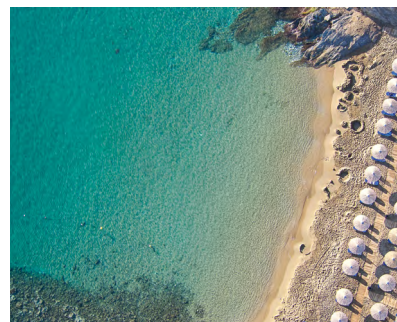
**Dine Out Experience:** Indulge in an authentic dine out experience in two selected Greek Tavernas situated within the picturesque village of Panormo. **D**

\*Dine Out experience is available between 01/05 - 31/10

**Antikristo Traditional** Cretan traditional, family-style barbeque by the sea. **D**

Vegan / Vegetarian / Gluten Free options in all restaurants.

**Agreco Farms** Cretan Farm & à La Carte Taverna. 18,1 km from the



THE RESORT LIES IN A BLUE FLAG AWARDED SANDY BAY WITH TWO CREEKS. UNFORGETTABLE DAYS UNDER THE CRETAN SUN.

hotel a dining à la carte option, a set menu with Cretan dishes, based on the farm's organic produce. Extra charge.

#### **BARS & LOUNGES**

Alcoholic and non-alcoholic drinks, Beer, Wine and Soft Drinks are served at 7 bars.

**Lobby Bar** Enjoy fine wines, cocktails, beverages while sampling succulent snacks.

**Pool Bar** All day complimentary self-service bar by the main pool. Brunch with a selection of light bites, croissants, and toasted sandwiches. Various snacks during the day and late at night.

**Beach Bar** Unlimited refreshments, coffee and beers at this beachfront self-service bar all day long.

**Roc Bar** An all day Fun Self Service Station is the ideal place to meet people and have fun with cocktails, cold beverages and light fare.

**Bar Di Vino** An all-day summer fantasy for unlimited refreshments from an eclectic selection of wines, beverages and coffee.

**Poseidon Bar** The Aqua Park – Kingdom of Poseidon bar offers refreshment drinks, coffee and beers in the sun-drenched patios all day long.

#### **New Kafeneio – Traditional Coffee House**

Sip on rich Greek coffee, aromatic herbal infusions, and enjoy ouzo or tsikoudia accompanied by handcrafted meze, loukoumia, and traditional sweets.

**All Inclusive Dining-Terms & Conditions** All Inclusive is valid in all available Restaurants & Bars and does not apply to in-room dining. One à la carte meal is included per 7 nights' stay, free of charge. Restaurants are subject to availability and are subject to change due to seasonality, weather or other unforeseen circumstances. Restaurants can be closed on special occasions by the hotel. Operating days and hours may vary during season. Reservations for all meals are required. All Inclusive Board ends at 5 p.m. on the departure day.

#### **KIDS**

**Kids Go Free** Children up to 12 years old enjoy free kids dining in the "Tasty Corner", free Grecoland kids' programme, GrecoTeens and outdoor creative activities.

**Greco baby, 0-4 yrs.** Pre-arrival order of baby equipment, some with extra charge • Babysitting services are available for children from 4 y.o. for an additional charge • Infant food available at the main restaurant • Infant products available at the hotel mini market

**Grecoland Kids Club, 4-12 yrs.** Dedicated kids club with playground, and various fun and creative activities for the whole family • 6 days per • Children under 4 yrs. must be supervised at all times by a parent or guardian • Multilingual staff

**Greco teens 12-17 yrs.** From mid-June till mid-September, group sports and entertainment activities

**All Inclusive Kids Dining, 3-12 yrs.** Kids' menus are available at à la carte restaurants

#### **AMAZING AQUA PARK**

Get ready to take the plunge! The aqua park – Kingdom of Poseidon at Marine Palace & Aqua Park in Crete is filled with heart stopping, adrenaline pumping, record breaking aqua towers, rides and waterslides. This mega-waterpark, is a whirling 6,000m<sup>2</sup> of excitement waiting to be discovered. The ultimate experience for the whole family in absolute safety.

#### **NEW FITNESS CENTER & SPA**

A split level Spa and Fitness Club connected by a glass elevator. New luxurious massage cabins with views, couples massage room, kids spa menu (extra charge). The beloved skylight indoor spa pool with reclad beautiful mosaic tiles and heated water features. The Fitness – Gym

is complimentary with his and her saunas, and cardio equipment. The Gym is bathed in daylight. **Spa Facilities** • Indoor Pool 75 m<sup>2</sup> with hydromassage bathtub • Fitness room with various equipment • 3 Private Massage Rooms • Sauna • Beauty Salon • Hairdresser • Fitness aerobic area • Changing Rooms • Personalized treats including Special Facials, Body Treatments, and Massages.

#### **FITNESS & ACTIVITIES**

**Gymnastics** Step • Zumba • Body Forming • Flexibar • Aqua-fit • Stretch and relaxation • Nordic Walking • Yoga

**Sports & Fun** Tennis and football court, Archery, Beach volley, Water polo, Table tennis, Darts, Boccia, Windsurfing (for qualified users), Pedal Boats (upon availability), Canoes.

*With extra charge:* Tennis Coaching, Billiard, electronic games, Watersports, PADI Atlantis Underwater Diving school with children, teenager and adult courses

**Outside The Hotel** Extra charge: Horse Riding • Golf • Mountain Bike

**Evening Entertainment** • Shows • Live Music once per week • Professional External and Hotel Entertainment Shows, 6 times per week **Extra Charge:** Various Local Experiences: • Pottery experience in "Margarites" traditional village • Photo shooting with traditional Cretan costume • Fortezza castle private tour experience • Greek pastries workshop • "Live like a Local" in Rethymnon city

**Meeting Facilities** Spacious conference room with technical equipment and capacity up to 260 people

#### **ENVIRONMENTAL POLICY**

Travelife Gold Award • Waste Recycling and Energy Saving Systems • Beach awarded with the European Blue Flag • Use of organic products/produce.

#### **SERVICES**

**WiFi Free**, in all hotel areas and guest rooms.

**Guest Portal** Useful information & services about their stay, available online for all guests.

**24h WhatsApp** Concierge Designated staff members are at call on WhatsApp, to assist guests on everything they may desire.

**GrecoTel Mobile App** proposes a world of information regarding your stay, on-line-reservation at the à la carte restaurants and services in and out of the hotel.

**Multilingual personnel** English, German, Russian, French, Italian, Greek

**Medical Services** 24hr Medical cover, Doctor on call -extra charges may apply depending on guests' travel insurance • Pharmacy at 500 m • Hospital at 25 km

**Transport** Car Rental Desk in Hotel • Bus stop 600m

**Taxi Service on request** to Rethymnon 25km • to Heraklion Airport 59km • to Chania Airport 86km

**Shopping** Hotel shops include: "Charisma" Jewellery Boutique • Souvenir Shop / Mini Market • Boutique • Photographer Services.

**Money** All major Credit Cards are accepted • ATM in the hotel • Nearest Bank at 9 km

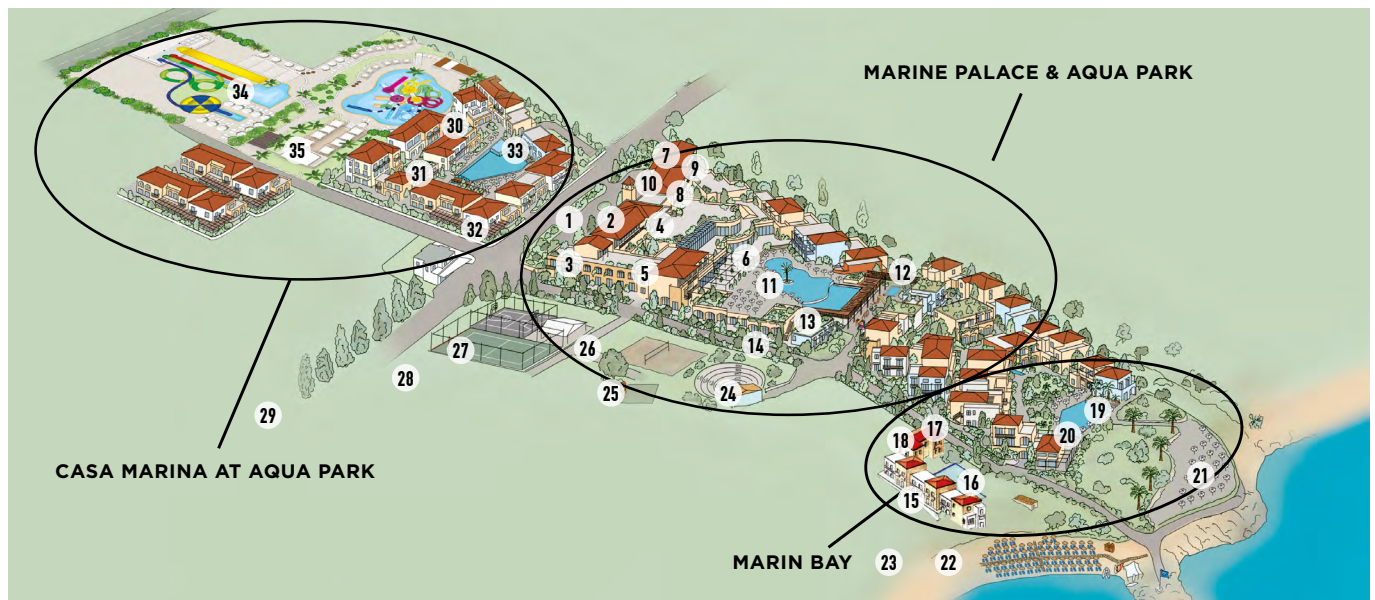
**Voltage** Current 220V.

**Mobility Impaired Guests** Mobility impaired guests friendly. There are ramps throughout the hotel. All departments are accessible to guests in wheelchairs. Ramp section next to most of the steps in the hotel. No specially adapted rooms for the mobility impaired guests.

**Animals** Dogs that weigh up to 8kg are allowed in selected bungalows with private gardens. Restrictions apply. Service animals are allowed to accompany their handler in all hotel premises. View pets policy at grecotel.com/pets-policy

**Official Hotel Categorization** Four star Resort

**Contact details** Panormo, Rethymnon, Crete – GR 740 57, TEL.: (+30) 28340 51610 E-mail: reservations.mp@grecotel.com



### MARINE PALACE & AQUA PARK HOTEL MAP

- |                                |  |   |   |
|--------------------------------|--|---|---|
| 1. Entrance                    | 11. Panorama Lagoon Pool                 | 19. Tropical Exotic Beachfront Seawater Pool    | 28. Parking   |
| 2. Reception - Lobby Bar       | 12. Babyland                             | 20. Big Blue, Greek Taverna - Roc Bar           | 29. Sunstores – Mini Market                                     |
| 3. Charisma Jewellery Boutique | 13. Sunstores - Mini Market & Boutique   | 21. Antikristo Traditional, barbeque by the sea | 30. Casa Marina at Aqua Park                                    |
| 4. Fifty-Fifty Boutique        | 14. Kafeneion - Traditional Coffee House | 22. Hotel Beach                                 | 31. Casa Marina Bar Di Vino                                     |
| 5. Main Restaurant & Terrace   | 15. Marin Bay                            | 23. Water Sport Center                          | 32. Trattoria Di Casa Marina, Poolside Mediterranean Restaurant |
| 6. Pool Bar                    | 16. Sea Front Marin Bay Pool             | 24. Amphiteater                                 | 33. Casa Marina Suites Freshwater Garden Pool                   |
| 7. Indoor Pool                 | 17. Souvlaki Kingdom                     | 25. Grecoland                                   | 34. Aqua Park “Kingdom of Poseidon”                             |
| 8. Elixir Spa                  | 18. Marin Bay Club, Fusion Restaurant    | 26. Sports area                                 | 35. “Poseidon” Bar  |
| 9. Playroom                    |  | 27. Multi Functional Court                      |   |
| 10. Conference Room            |  |   |   |

### ACCOMMODATION CHART

#### All room types include: •

- Mini fridge
- Complimentary tea & coffee facilities
- Nespresso machine with 2 free pods per adult/per day (selected accommodation)
- In-room safe
- Laundry services (additional charges apply)
- Luxurious beds & linens
- Hairdryer
- Bathrobes & slippers
- Beach towels
- Bathroom amenities
- Complimentary WiFi
- LCD TV
- 24/7 WhatsApp Concierge

ROOM TYPES	LOCATION	SIZE	SLEEPS	VIEW
<b>MARINE PALACE &amp; AQUA PARK</b>				
Double Room Main Building	Main Building	26 m <sup>2</sup>	2+1	Sea, Side Sea or Garden
Bungalow	Bungalow Area	26 m <sup>2</sup>	2+1	Sea, Side Sea or Garden
Family Bungalow	Garden Area	35 m <sup>2</sup>	2+2	Sea, Side Sea or Garden
Family Room Open Plan	Main Building	30 m <sup>2</sup>	2+2	Side Sea
Family Room Main Building	Main Building & Garden Area	35 m <sup>2</sup>	2+2	Sea, Side Sea or Garden
Mini Pool Family Suite Sea View	Main Building	35 m <sup>2</sup>	3+1	Sea
Mini Pool Grand Family Suite	Main Building	70 m <sup>2</sup>	6+1	Sea
Family Bungalow Bay View	By the seafront	35 m <sup>2</sup>	3+2	Sea
Maisonette Main Building	Main Building	45-50 m <sup>2</sup>	2+2	Sea
Family Adjoining Rooms	Main Building & Bungalow Area	52m <sup>2</sup>	4+2	Garden view
<b>MARIN BAY</b>				
Marin Bay Bungalow	By the seafront	26m <sup>2</sup>	2+1	Sea
Marin Bay Family Bungalow Side Sea View	By the seafront	35m <sup>2</sup>	2+2	Side Sea
Marin Bay Family Bungalow	By the seafront	35m <sup>2</sup>	2+2	Sea
Marin Bay First Row Family Bungalow Suite	By the seafront	45-50m <sup>2</sup>	2+2	Side Sea
Seafront Junior Suite	By the seafront	35m <sup>2</sup>	2+2	Direct Sea
Seafront Suite	By the seafront	50m <sup>2</sup>	2+2	Direct Sea
<b>CASA MARINA AT AQUA PARK</b>				
Casa Marina Bungalow	Casa Marina Building	20-25m <sup>2</sup>	2+1	Side Sea or Landscape
Casa Marina Studio	Garden Area	26m <sup>2</sup>	2+1	Garden
Casa Marina Junior Family Room Garden View	Casa Marina Building, Garden Area	30-35m <sup>2</sup>	2+2	Landscape
Casa Marina Family Suite	Garden Area	45-48m <sup>2</sup>	2+2	Garden or Pool
Casa Marina Superior Suite Garden View	Casa Marina Building	45-50m <sup>2</sup>	2+2	Landscape
Casa Marina Family Maisonette	Casa Marina Building	45-50m <sup>2</sup>	2+2	Side Sea or Landscape
Casa Marina Grand Family Suite Side Sea View/Pool View	Garden Area	60m <sup>2</sup>	3+2	Side Sea or Pool
Casa Marina Family Apartment	Garden Area	70-73m <sup>2</sup>	4+2	Garden or Pool

ACCOMMODATION LAYOUTS & PHOTOS ARE SAMPLES AND MAY VARY DEPENDING ON THE POSITION WITHIN THE HOTEL. MEASUREMENTS ARE APPROXIMATE TO THE NEAREST m<sup>2</sup>

View more details & photos about facilities, services & room details online at [marinepalace.grecotel.com](http://marinepalace.grecotel.com)

# MARINE PALACE & AQUA PARK



## DOUBLE ROOM

SEA, SIDE SEA OR GARDEN VIEW

**Location:** Main Building

**View:** Sea, Side Sea or Garden view

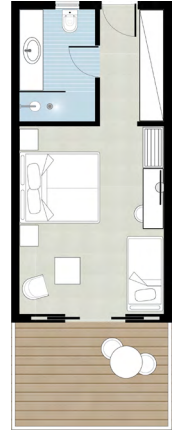
**Size:** Indoor: 26 sq.m.

**Layout:** Open plan

**Sleeps:** 3 adults or 2 adults + 1 child

**Beds:** King size bed or twin beds & one extra single bed

**Bath:** One bathroom



## BUNGALOW

SEA, SIDE SEA OR GARDEN VIEW

**Location:** Bungalow area, Ground floor/1st/2nd floor

**View:** Sea, Side Sea or Garden view

**Size:** Indoor: 26 sq.m.

**Layout:** Open plan

**Sleeps:** 3 adults or 2 adults + 1 child

**Beds:** King size bed or twin beds & one extra single bed

**Bath:** One bathroom



## FAMILY BUNGALOW

SEA, SIDE SEA OR GARDEN VIEW

**Location:** At Garden area, Ground or 1st floor

**View:** Sea, Side Sea or Garden view

**Size:** Indoor: 35 sq.m.

**Layout:** Separate rooms

**Sleeps:** 2 adults + 2 children

**Beds:** One king size bed or twin beds & two extra single beds

**Bath:** One bathroom



Type 1

Type 2



## FAMILY ROOM OPEN PLAN

SIDE SEA VIEW

**Location:** Main Building, Ground floor/1st/2nd floor

**View:** Side Sea view

**Size:** Indoor: 30 sq.m.

**Layout:** Open plan

**Sleeps:** 2 adults + 2 children

**Beds:** King size bed & two single beds

**Bath:** One bathroom





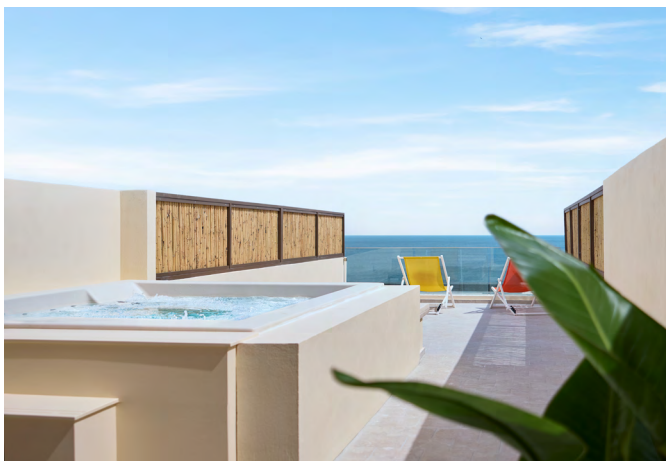
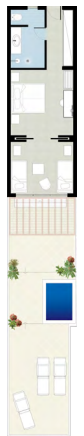
## FAMILY ROOM SEA, SIDE SEA OR GARDEN VIEW

**Location:** Main Building, Garden Area, Ground floor/1st /2nd floor  
**View:** Sea, Side Sea or Garden view  
**Size:** Indoor: 35 sq.m.  
**Layout:** Separate rooms with sliding door  
**Sleeps:** 2 adults + 2 children  
**Beds:** King size bed or twin beds & two extra sofa beds  
**Bath:** One bathroom



## NEW MINI POOL FAMILY SUITE SEA VIEW

**Location:** At Main Building, 3rd floor  
**View:** Sea  
**Size:** Indoor: 35 sq.m., outdoor: 45 sq.m  
**Layout:** Spacious room with sliding doors  
**Sleeps:** 3 adults + 1 child  
**Beds:** One king size bed  
**Bath:** One bathroom  
**Special:** Private rooftop veranda, outdoor hot tub, panoramic sea view



## NEW MINI POOL GRAND FAMILY SUITE SEA VIEW

**Location:** At Main Building, 3rd floor  
**View:** Sea  
**Size:** Indoor: 70 sq.m., outdoor: 45 sq.m  
**Layout:** Spacious room with sliding doors  
**Sleeps:** 6 adults + 1 child  
**Beds:** Two king size beds or twin beds & three extra single beds  
**Bath:** Three bathrooms  
**Special:** Private rooftop veranda, 3 bathrooms, outdoor hot tub, panoramic sea view



## NEW FAMILY BUNGALOW BAY VIEW SEA VIEW

**Location:** Privileged location. By the seafront, Ground and 1st floor  
**View:** Sea  
**Size:** Indoor: 35 sq.m., Outdoor: 3-5 sq.m.  
**Layout:** Spacious bungalow with 2 separate bedrooms  
**Sleeps:** 3 adults + 2 children  
**Beds:** One king size bed and two single bunk beds and an extra single bed  
**Bath:** One bathroom  
**Special:** Smart TV 65"



Type 1

Type 2



## MAISONETTE MAIN BUILDING

The Maisonette Main Building are the perfect option for families who seek the serenity of a family holiday. They offer separate sleeping areas on two levels, conveniently located in the Main Building, with a generous interior tasteful furniture in a contemporary décor.

**Location:** Main Building, **View:** Sea

**Size:** 45-50m<sup>2</sup>, **Outdoor:** 3-5m<sup>2</sup>

**Layout:** Split Level, **Sleeps:** 2 Adults + 2 Children

**Beds:** King size bed & two extra single beds

**Bath:** Two bathrooms



## FAMILY ADJOINING ROOMS

**Room Size:** 52m<sup>2</sup>

**Layout:** Two Adjoining Rooms next to each other without a connecting door

**Location:** Main Building & Bungalow Area

**View:** Garden view

**Sleeps:** 4 adults & 2 children

**Beds:** 2 king size beds or twin beds & two extra single beds

**Bath:** Two bathrooms



1st room

2nd room



## MARIN BAY BUNGALOW SEA VIEW

**Location:** By the seafront, Ground and 1<sup>st</sup> floor

**View:** Sea view

**Size:** Indoor: 26 sq.m., outdoor: 3-5 sq.m

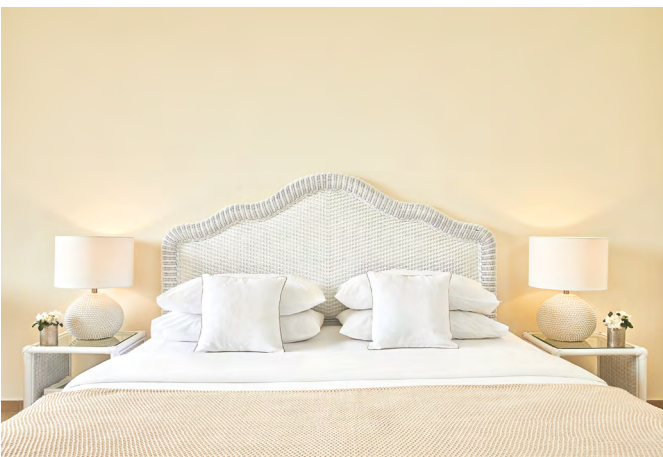
**Layout:** Open Plan

**Sleeps:** 2 adults + 1 child

**Beds:** King size bed & one single bed

**Bath:** One bathroom

**Special:** Privileged location



## MARIN BAY FAMILY BUNGALOW SIDE SEA VIEW

**Location:** By the seafront, Ground and 1<sup>st</sup> floor

**View:** Side Sea view

**Size:** Indoor: 35 sq.m., Outdoor: 3-5 sq.m

**Layout:** Separate Rooms with sliding door

**Sleeps:** 2 adults + 2 children

**Beds:** King size bed & two single beds

**Bath:** One bathroom

**Special:** Privileged location





## MARIN BAY FAMILY BUNGALOW

### SEA VIEW

**Location:** By the seafront, Ground and 1<sup>st</sup> floor

**View:** Sea view

**Size:** Indoor: 35 sq.m., outdoor: 3-5 sq.m

**Layout:** 2 Separate Bedrooms

**Sleeps:** 2 adults + 2 children

**Beds:** One king size or twin beds and two extra single beds

**Bath:** One bathroom

**Special:** Privileged location



Type 1

Type 2



## MARIN BAY FIRST ROW FAMILY BUNGALOW SUITE

### SIDE SEA VIEW

**Location:** By the seafront, Ground and 1<sup>st</sup> floor

**View:** Side Sea view

**Size:** Indoor: 45-50 sq.m., outdoor: 3-5 sq.m

**Layout:** Separate rooms & en suite living area

**Sleeps:** 2 adults + 2 children

**Beds:** King size bed four-poster bed & 2 single bunk beds

**Bath:** One bathroom

**Special:** Privileged location, Nespresso machine with 2 free pods per adult/per day.



## NEW SEAFRONT JUNIOR SUITE

### DIRECT SEA VIEW

**Location:** Seafront, Ground and 1st floor

**View:** Direct Sea View

**Size:** Indoor: 35 sq.m., Outdoor: 3-5 sq.m.

**Layout:** Spacious suite with 2 separate bedrooms

**Sleeps:** 2 adults & 2 children

**Beds:** One king size bed & two single beds

**Bath:** One bathroom

**Special:** Privileged seafront location, Smart TV 65"



## NEW SEAFRONT SUITE

### SEA VIEW

**Location:** By the seafront, Ground and 1st floor

**View:** Direct Sea View

**Size:** Indoor: 50 sq.m., Outdoor: 3-5 sq.m.

**Layout:** Spacious bungalow suite with separate rooms & En suite living area

**Sleeps:** 2 adults & 2 children

**Beds:** One king size bed four-poster & two single bunk beds

**Bath:** One bathroom

**Special:** Privileged seafront location, Smart TV 65"



# CASA MARINA AT AQUA PARK



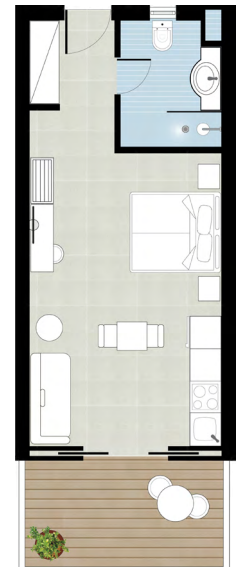
## CASA MARINA BUNGALOW SIDE SEA OR GARDEN VIEW

**Location:** Casa Marina Building  
**View:** Garden or Side Sea view  
**Size:** Indoor: 20-25 sq.m.  
**Layout:** Open Plan  
**Sleeps:** 2 adults + 1 child  
**Beds:** King size bed & 1 optional extra single bed  
**Bath:** One bathroom  
**Specials:** Ample wardrobe. Ideal location near the resort's Aqua Park.



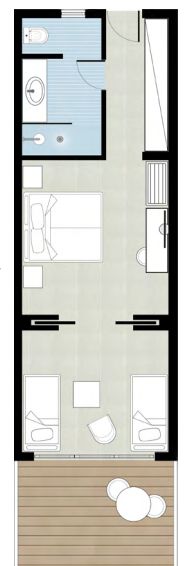
## CASA MARINA STUDIO GARDEN VIEW

**Location:** Garden Area, Ground floor  
**View:** Garden View  
**Size:** Indoor: 26 sq.m.  
**Layout:** Open plan  
**Sleeps:** 2 adults + 1 child  
**Beds:** King size bed & one extra single or sofa bed  
**Bath:** One bathroom  
**Specials:** Built in fully equipped kitchen dishwasher, fridge/freezer, microwave oven, electric oven. Spacious bathroom.



## CASA MARINA JUNIOR FAMILY ROOM GARDEN VIEW

**Location:** Casa Marina Building, Garden Area, Ground floor  
**View:** Landscape view  
**Size:** Indoor: 30-35 sq.m.  
**Layout:** 2 sleeping areas separated by sliding door  
**Sleeps:** 2 adults + 2 children  
**Beds:** King size bed & two extra single beds  
**Bath:** One bathroom  
**Specials:** Spacious bathroom. Ample wardrobes.



## CASA MARINA FAMILY SUITE

### POOL OR GARDEN VIEW

**Location:** Garden Area, Ground or 1st floor

**View:** Pool or Garden view

**Size:** Indoor: 45-48 sq.m.

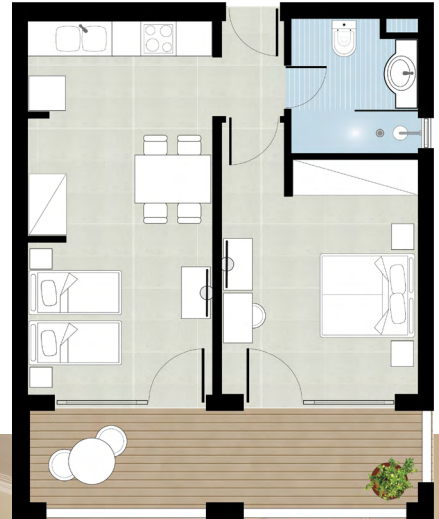
**Layout:** Separate rooms, Master bedroom & distinct living, dining and kitchen areas

**Sleeps:** 2 adults + 2 children

**Beds:** King size bed & two extra single beds

**Bath:** One bathroom

**Specials:** Washing machine in some suites, fully equipped kitchen with dishwasher, fridge/freezer, microwave oven, electric oven. Nespresso machine with 2 free pods per adult/per stay.



## CASA MARINA SUPERIOR SUITE

### GARDEN VIEW

**Location:** Casa Marina Building

**View:** Landscape

**Size:** Indoor: 45-50 sq.m

**Layout:** 2 separate sleeping areas

**Sleeps:** 2 adults + 2 children

**Beds:** King size bed & 2 extra single beds

**Bath:** Two bathrooms

**Specials:** Spacious accommodation. Large fully furnished balcony or terrace with private garden. Nespresso machine with 2 free pods per adult/per stay. Ideal location near the resort's Aqua Park.



## CASA MARINA FAMILY MAISONETTE

### LANDSCAPE OR SIDE SEA VIEW

**Location:** Casa Marina Building

**View:** Landscape or Side Sea view

**Size:** Indoor: 45-50 sq.m.

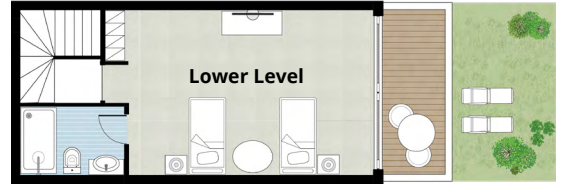
**Layout:** Split Levels

**Sleeps:** 2 adults + 2 children

**Beds:** King size bed & 2 extra single beds

**Bath:** Two bathrooms

**Specials:** Ample walk-in wardrobes. Nespresso machine with 2 free pods per adult/per stay.



Type 1

Type 2

## CASA MARINA GRAND FAMILY SUITE

### POOL OR SIDE SEA VIEW

**Location:** Garden Area, Ground or 1st floor

**View:** Side Sea or Pool view

**Size:** Indoor: 60 sq.m.

**Layout:** Master bedroom & distinct living, dining and kitchen areas

**Sleeps:** 3 adults + 2 children

**Beds:** One king size bed, two single beds & one extra bed

**Bath:** Two bathrooms

**Specials:** Nespresso machine with 2 free pods per adult/per stay.





## CASA MARINA FAMILY APARTMENT

### POOL OR GARDEN VIEW

**Location:** Garden Area Ground or 1st floor

**View:** Pool or Garden view

**Size:** Indoor: 70-73 sq.m.

**Layout:** Spacious apartment with separate rooms

**Sleeps:** 4 adults + 2 children

**Beds:** 2 King size beds & 3 extra single beds

**Bath:** Two bathrooms

**Specials:** Nespresso machine with 2 free pods per adult/per stay.

