



Panorama Village Hotel ****

FACT SHEET

PANORAMAVILLAGEHOTEL
AGIAPELAGIA,715 00
HERAKLION,CRETE,GREECE
+302810811002
reservations@panoramavillagehotel.com
www.panoramavillagehotel.com

Savvas Kornaros
Hotel Manager
Panorama Village Hotel
Mobile: 00306947990336
manager@panoramavillagehotel.com

Panorama Village Hotel

Contents

Hotel Description.....	3
Location Description.....	4
Room Design	5
Room Types & Facilities.....	9
Dining Options.....	12
Liquid Refreshments.....	14
Swimming Pool.....	15

Panorama Village Hotel

Resort Description

The 4-star **Panorama Village Hotel** is a holiday complex in the area of Agia Pelagia. Built on the hill with panoramic views on the picturesque fishing village and the blue waters of Agia Pelagia Bay. It is ideal for couples, families with children and honeymooners to spend their first days together.

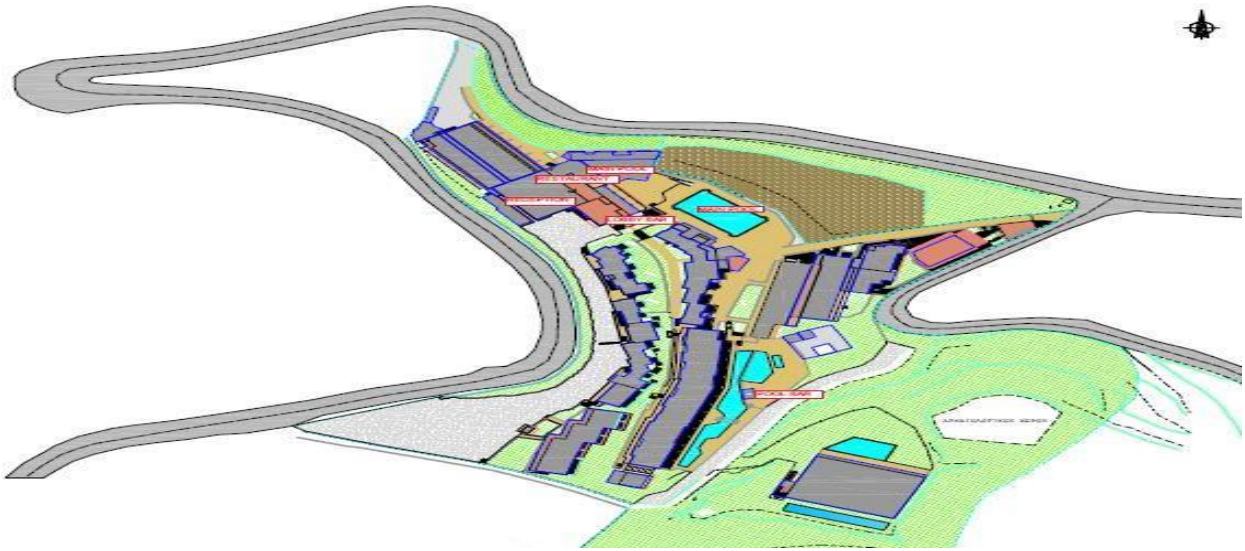
The Panorama Village Hotel, built with care and respect the environment, and combines mountain surroundings with breathtaking sea views. The luscious garden landscape provides tranquility and relaxation.



The hotel has been in operation since 1984 with improvements and renovations and offers 250 guests' rooms and suites. The experienced, friendly staff and offer excellent service and legendary Cretan open-hearted hospitality.

The room types feature the choice of either private balconies or private terraces, all with magnificent view to the Hotel's gardens. Many rooms offer panoramic views to the Aegean Sea that is the characteristic of the area. The guests have the opportunity to enjoy private moments with a glass of wine on their balcony or a cocktail at the pool bar. The view can please even the most discerning traveler, with a choice of beautiful scenery created by the combination of the gardens, the pool and the Aegean Sea.

Panorama Village Hotel



To enhance the overall experience, Panorama Village Hotel offers a variety of food and beverage facilities designed to please every guest. More specifically, the Hotel allocates the main all-inclusive Restaurant with a garden terrace for guests to enjoy breakfast, lunch and dinner.

In the main building of the Hotel the guests can enjoy their beverage at the lobby bar terrace with amazing view to the Aegean Sea

Location Description

Panorama Village Hotel is located on the North side of Crete, West of Heraklion town. The area is known as Agia Pelagia. There are plenty of Tavernas, Restaurants and beach bars and at the same time in great proximity to Heraklion, only 18km away. The distance from the Heraklion airport Nikos Kazantzakis is 22km, and from Heraklion Port is 18 km.

LONGITUDE:35°23'50"N

LATITUDE:25°01'17"E



Location of Panorama Village Hotel on the island of Crete

Panorama Village Hotel

Room Design

The combination of earthy colors in minimal design and concrete tiles is offering a sense of discrete luxury to the resort guests and a feeling of visual continuity with the surrounding Mediterranean landscape. Different theme colors are applied in the decoration and textiles, inspired by the magical Greek summer weather and surroundings. The deep blue of the Aegean Sea, the earthy ochre of the Mediterranean terrain or the red of the traditional Cretan clay pottery and art. The typical renovated room is equipped with a double bed and side tables with individual lighting and a chair opposite an office desk. A multipurpose wall mounted wardrobe is providing several utilities, such as mini fridge, a bench that can be used as a suitcase stand, storage area and mirror. The bathroom is divided by a wood and glass wall separator that provides the privacy needed and allows the light to the bathroom at the same time.



Elegant Superior Double Room with Sea View

Panorama Village Hotel



Superior Double Room

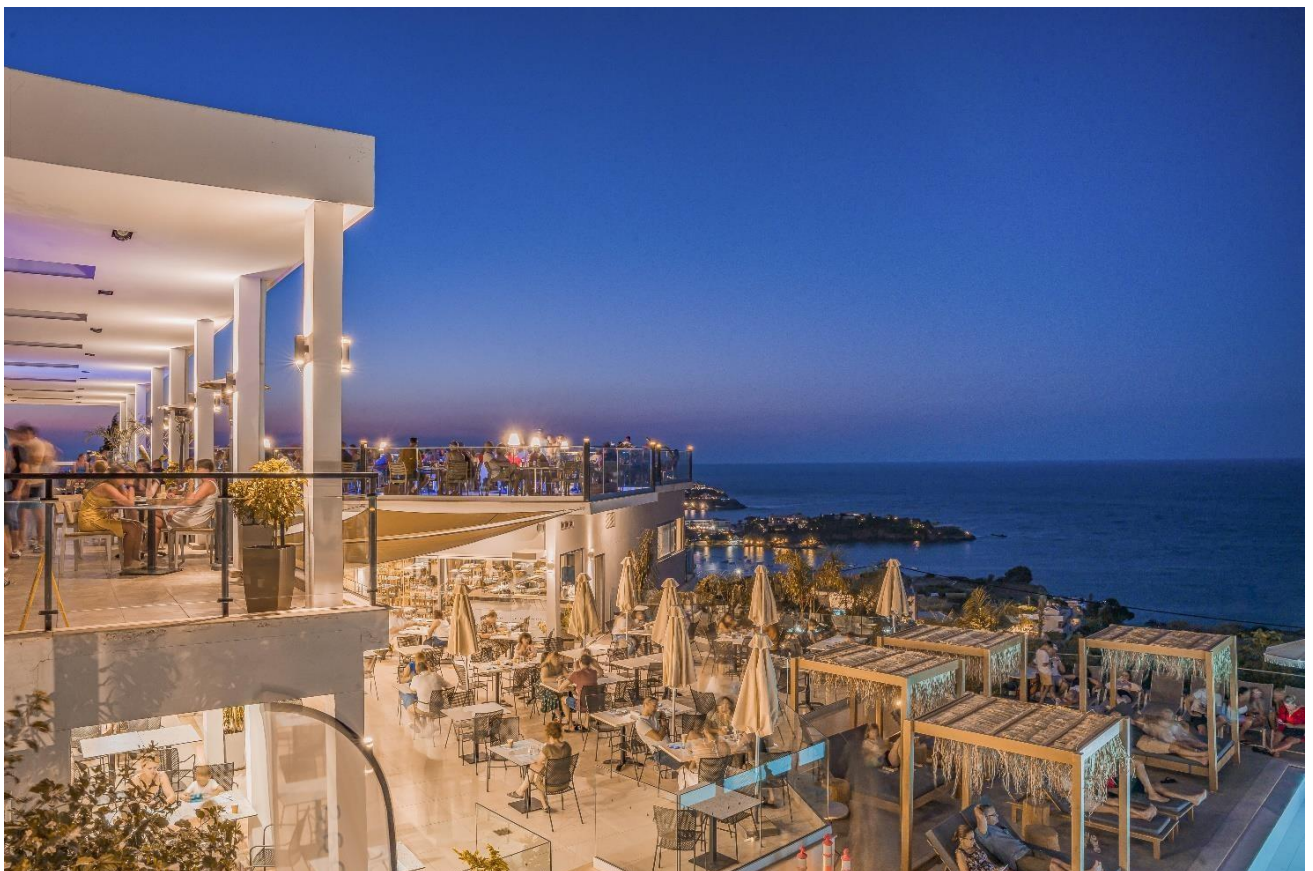


Superior Double Room

Panorama Village Hotel



Superior Double Room



Terrace View

Panorama Village Hotel



Aerial View

Panorama Village Hotel

Room Types & Facilities

Superior Double or Triple Room (22-27m²)



All Superior double or triple Rooms feature with balcony and one bedroom with twin or double bed (one single bed or sofa bed for the triple rooms), with shower, with a beautiful Sea or Garden view.

The accommodation is ideal for 2 people for the double room and 3 people for the triple room.

The Superior Room is also equipped with:

Individual air-conditioning/heating (free), Free Wi-Fi, telephone, Free safety deposit box, 32" TV (with satellite & music channels), fridge, shower/WC, hairdryer, balcony, 12-hour room service (extra charge, 07:30-22:00), wake-up service, maid service (daily), linen change (3 times per week), towel change (every day), laundry & ironing service (on request-extra charge), beach towels with deposit, coffee & tea making facilities.

Family Room(24-27m²)



All Family Rooms feature with balcony, one double bed & Sofa beds or bunk beds, shower, with a beautiful Sea or Garden view.

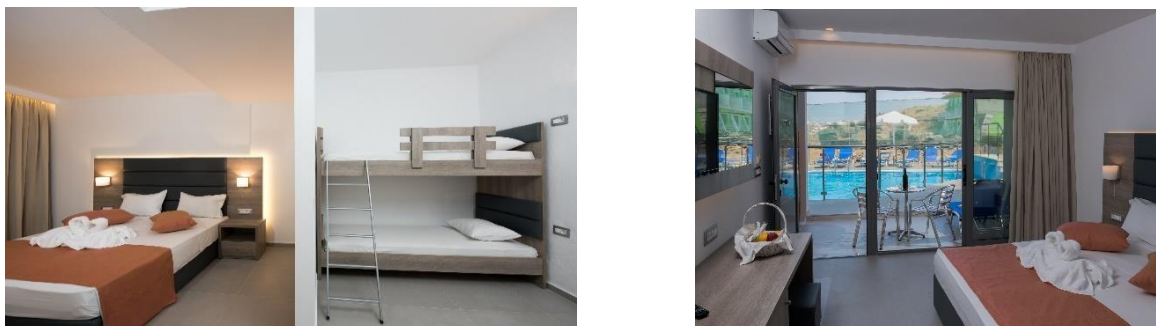
The accommodation is ideal up to 4 persons.

The Family Room is also equipped with:

Individual air-conditioning/heating (free), free Wi-Fi, direct-dial telephone, free safety deposit box, 32" TV (with satellite & music channels), fridge, shower/WC, hairdryer, balcony/terrace, 12-hour room service (extra charge, 07:30-22:00), wake-up service, maid service (daily), linen change (3 times per week), towel change (every day), laundry & ironing service (on request-extra charge), beach towels with deposit, coffee & tea making facilities.

Panorama Village Hotel

Family Superior Sharing Pool Room (24- 28m2)



All Family Superior Sharing Pool Rooms feature with terrace, separated bed rooms with one double bed & bunk beds, Shower/wc with a beautiful Sea or Garden view with a sharing pool in front. The accommodation is ideal up to 4 persons.

The Superior Sharing Pool Room is also equipped with:

Individual air-conditioning/heating (free), free Wi-Fi, direct-dial telephone, free safety deposit, 32" TV (with satellite & music channels), fridge, shower/WC, hairdryer, terrace, 12-hour room service (extra charge, 07:30-22:00), wake-up service, maid service (daily), linen change (3 times per week), towel change (every day), laundry & ironing service (on request-extra charge), beach towels with deposit, coffee & tea making facilities.

Junior Suite (32m2 + 32m2 balcony)



All Junior Suites feature either a balcony or terrace, one double bed & two sofas with shower, and a beautiful Sea View.

The accommodation is ideal up to 4 persons.

The Junior Suite is also equipped with:

Individual air-conditioning/heating (free), free Wi-Fi, direct-dial telephone, free safety deposit box, 32" TV (with satellite & music channels), fridge, shower/WC, hairdryer, terrace, 12-hour room service (extra charge, 07:30-22:00), wake-up service, maid service (daily), linen change (3 times per week), towel change (every day), laundry & ironing service (on request-extra charge), slippers, beach towels with deposit, coffee & tea making facilities.

Panorama Village Hotel

Maisonettes (35 – 37 m²)



Our two-level Maisonettes have three types of categories,

- Maisonette with Sharing Pool and Sea View
- Maisonette with Sharing Pool and Mountain View
- Maisonette Mountain View (without Sharing Pool)

feature balcony/terrace, separate bedrooms with one double bed & two Sofa beds, shower/wc.

The accommodation is ideal up to 4 persons.

The Maisonettes Room is also equipped with:

Individual air-conditioning/heating (free), free Wi-Fi, direct-dial telephone, free safety deposit box, 32" TV (with satellite & music channels), fridge, shower/WC, hairdryer, balcony, 12-hour room service (extra charge, 07:30-22:00), wake-up service, maid service (daily), linen change (3 times per week), towel change (every day), laundry & ironing service (on request-extra charge), beach towels with deposit, coffee & tea making facilities.

Elegant Superior Room (22-25 m²)



The Elegant Superior double or triple Rooms feature with balcony and one bedroom with twin or double bed (one Sofa bed for the triple rooms), with shower, with option Sea View or Garden View.

The accommodation is ideal for 2 people for the double room and 3 people for the triple room.

The Elegant Superior Room is equipped with:

Individual air-conditioning/heating (free), Free Wi-Fi, telephone, Free safety deposit box, 32" TV (with satellite & music channels), fridge, shower/WC, hairdryer, balcony, 12-hour room service (extra charge, 07:30-22:00), wake-up service, maid service (daily), linen change (3 times per week), towel change (every day), laundry & ironing service (on request-extra charge), beach towels with deposit, coffee & tea making facilities. All rooms are equipped with NESPRESSO machines, with the first 4 coffees capsules free. Replacement upon request at an extra charge. Guests with minimum stay 7 days, can enjoy dinner for free once per week (Reservation is required 2 days at a minimum in advance). Opened 6 days/week.

Panorama Village Hotel

Dining Options

Dining in **Panorama Village Hotel** is a delicious experience, combining great quality of ingredients with the inventiveness of its talented chefs to offer you exquisite flavors, amazing aromas, and unforgettable tastes from Crete. Panorama Village Hotel offers a variety of Cretan dishes as well as international delicious choices in its Main Restaurant.

Main Restaurant (250m²)

Enjoy an amazing array of buffet choices for breakfast, lunch and dinner that includes a variety of beautifully presented culinary options with a different menu every day and live cooking from our professional chefs complementing the unique eating experience. The menu has its epicenter the Cretan gastronomy, maintain nights traditional values, while renewing them with several subtle on temporary strokes.

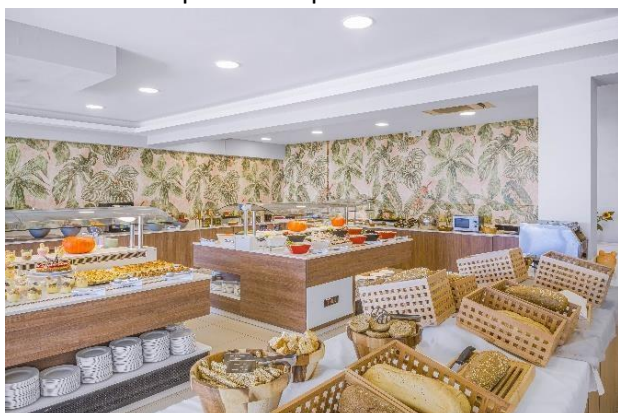
The Main Restaurant can accommodate 200 people indoors and 80 people at its outdoor area of 60m² with amazing view to the Aegean Sea.

Opening Hours (for all):

Breakfast: 07.30am - 10.00am

Lunch: 12.30pm - 14.30pm

Dinner: 18.30pm - 21.30pm



Panorama Village Hotel

A la Carte Restaurant Marea

Located next to the main Pool, offers an intimate dining experience with stunning sea view. Our Menu features a selection of Mediterranean dishes, prepared with the freshest ingredients by of our Executive Chefs. Guests with min. stay of 7 days (in Elegant Superior Rooms) can enjoy a dinner free once per week.

Opening Hours:

- Brunch/Lunch: 11:00 – 16:30
- Dinner: 19:00 – 00:00



Panorama Village Hotel

Liquid Refreshments

Lobby Bar (150m2)

The Lobby Bar & Lounge offers a cool and shady indoor space and outdoor terrace with amazing view to Aegean Sea and the picturesque fishing village of Agia Pelagia to relax and treat yourself. Mingle in a sophisticated elegant atmosphere as you enjoy a dizzying range of classic and contemporary cocktails



The Lobby Bar can accommodate 20 people indoor & 120 people outdoors.
Opening Hours (for all): 16h.00 - 00h.00

Pool Bar (80m2)

A coffee or a fresh healthy juice may be the best way to refresh and energize yourself during a hot summer day. Enjoy them all in, our Pool Bar in the middle of two swimming pools, which also serves a great variety of refreshments and summer cocktails,



Opening Hours (for all): 10h.30-18h.00

Panorama Village Hotel

Swimming Pools

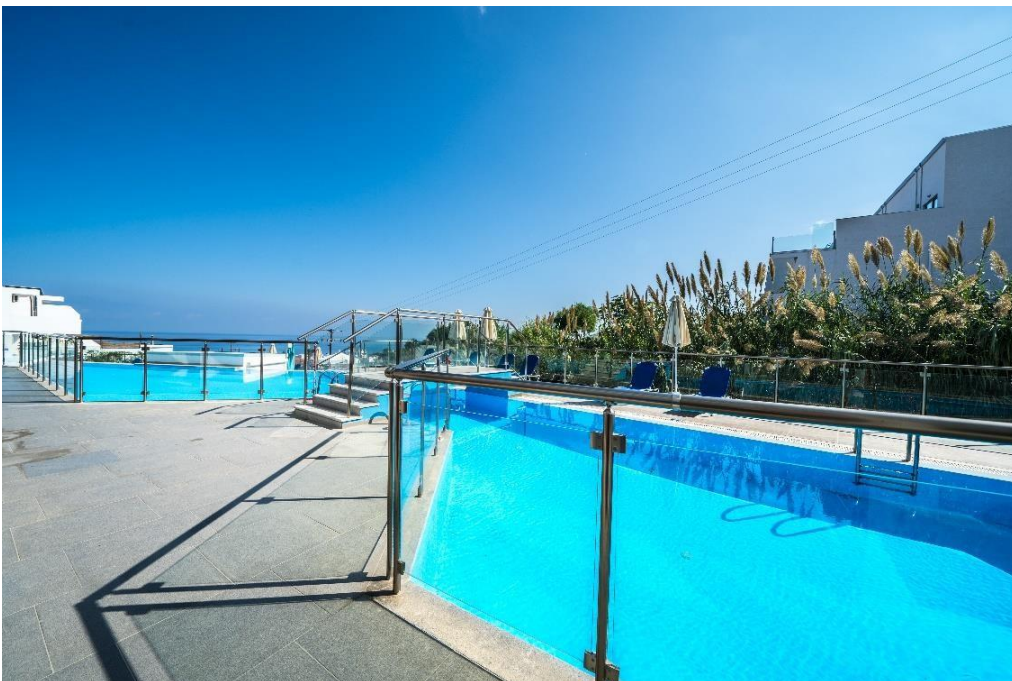
Swimming Pools

The hotel has a three large swimming pools with fresh water and one swimming pool for the kids.

The pools are equipped with sunbeds and umbrellas with magnificent view.

There are additional sunbeds and umbrellas on the beach at Agia Pelagia Village 2Km away from the hotel (with extra charge).

A Bus takes you to and from the beach three times a day, completely free of charge. Sea sports as well are available there (at a charge).



Panorama Village Hotel



Panorama Village Hotel

Panorama Village Hotel ****



Live the experience!!