

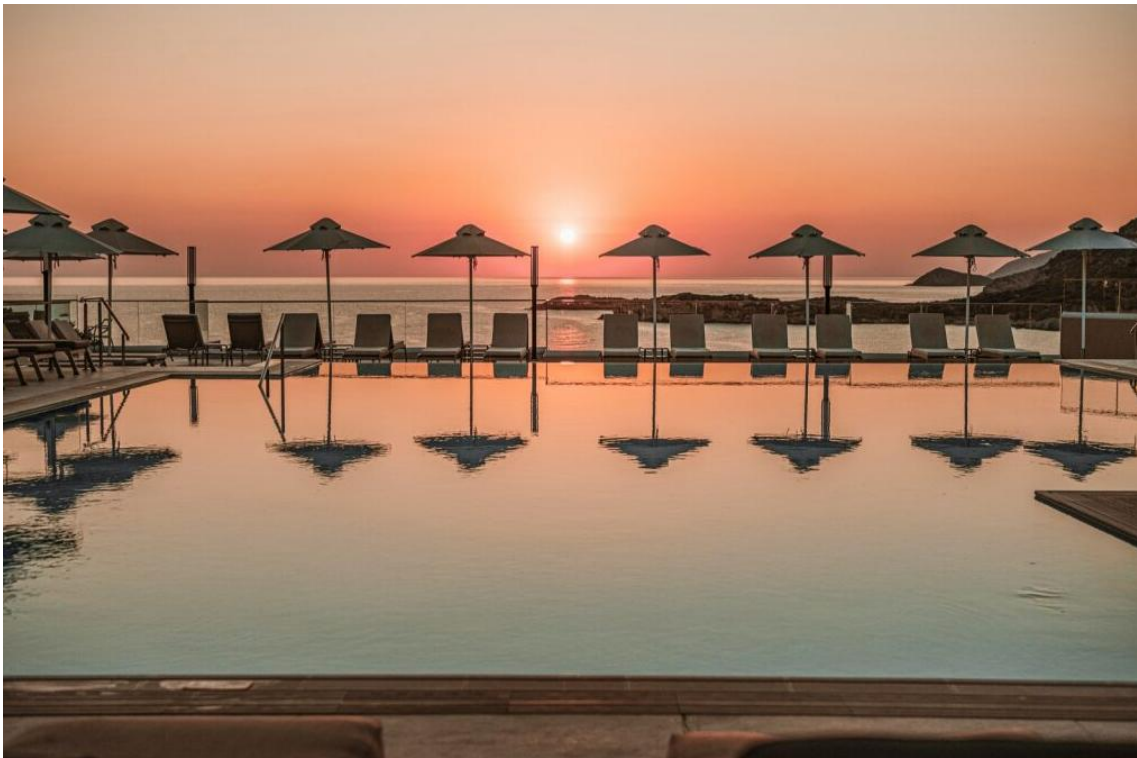


MIT SIS  
BALI PARADISE

# Hotel Description 2026

The vivid 4\* all-inclusive hotel on the picturesque seaside Bali village

- Stunning vistas where the majestic Cretan mountains meet the azure Aegean Sea
- Full renovation of rooms, pools, outdoor & public areas, main building, restaurants
  - Amazing sandy beach
  - Exquisite Mediterranean cuisine
- Perfectly situated for ultimate relaxation amidst lush, tranquil gardens
  - Waterpark with 3 slides



## Overview

Nestled at the foot of Mount Thalos, just a 3-minute walk from a Blue Flag-awarded sandy beach, Mitsis Bali Paradise is a welcoming 4-star all-inclusive hotel in the seaside village of Bali, Crete. Located 30 km from Rethymnon, the hotel offers 236 rooms with sea or garden views, a main restaurant, a Cretan à la carte restaurant, two swimming pools, kids' waterslides, a playground, and a full daily recreation programme.

In 2026, Mitsis Bali Paradise enters a new era with the completion of an **extensive renovation**. The project includes 120 fully renovated rooms, renovated restaurants, pool areas, lobby and reception, as well as fully upgraded public spaces, outdoor areas, and facilities. All areas have been redesigned using refined materials, modern comforts, elegant furnishings, soft lighting, and natural stone textures, creating a refreshed and relaxed guest experience.



# MIT SIS BALI PARADISE

## Address

---

Bali – Réthymnon - Crète - Greece

Post Code : 740 57

Longitude : +24° 78' 23.47"

Latitude: +35° 40' 80.62"

Tel.: +30 28340 94253

E-mail: [baliparadise.info@mitsis.com](mailto:baliparadise.info@mitsis.com) & [baliparadise.res@mitsis.com](mailto:baliparadise.res@mitsis.com)

Website: [www.mitsis.com](http://www.mitsis.com)

## Other Information

---

1st Year of operation: 1989

Beach: sandy

### Distances

Heraklion Airport: 52 km

Chania Airport: 102 km

Chania City: 96 km

Rethymnon City: 30 km

Heraklion City: 47 km

Heraklion Port: 49 km

Beach: 300 m

### Awards & certifications

Official rating: 4-star

Green Key

Greek Breakfast

Blue Flag certification

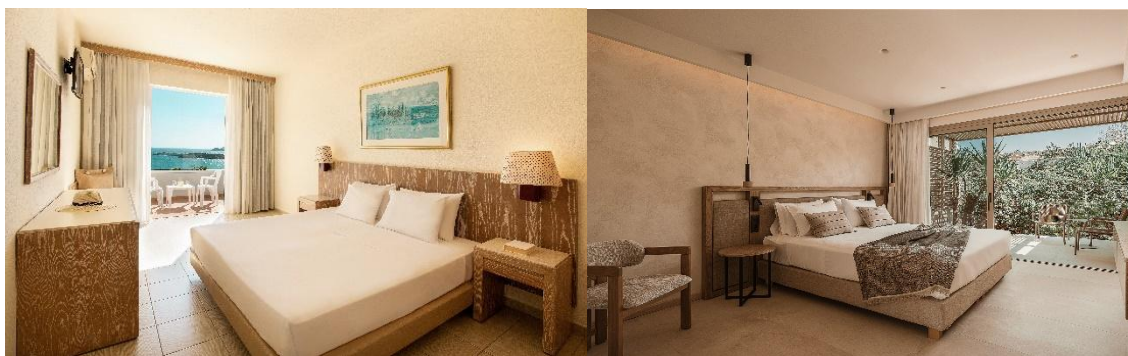


# MIT SIS BALI PARADISE

## Accommodation

---

All 236 rooms, across 8 different room types, are set within lush gardens and located in the renovated Main Building and three separate bungalow-style buildings. Of these, **120 rooms have been fully renovated**. Most rooms offer sea or garden views from their terrace or balcony. A friendly and relaxed atmosphere makes the property an ideal choice for all guests. Complimentary Wi-Fi is available in all rooms.



<b>236</b>	<b>rooms in total</b>
68	Double Garden View
32	Double Sea View
16	Quadruple Garden View
58	Superior Double Garden View
24	Superior Double Side Sea View
5	Superior Double Sea View
26	Family Garden View
7	Junior Suite with Private Ppool

Double room surface 23 m<sup>2</sup> + Superior Double 23 m<sup>2</sup>

Quadruple room surface 29 m<sup>2</sup>

Family room surface 33 m<sup>2</sup>

Junior suite surface 37 m<sup>2</sup>



# MIT SIS BALI PARADISE

## Room Comfortable Facilities

---

### **Double rooms**

Air-conditioning with individual control / Heating  
Bathroom floor covering: Tiles  
Bathroom with bathtub/shower  
Brand new mattresses & pillows in all rooms  
Direct dial telephone  
Mini fridge  
Furnished balcony or terrace with table and 2 chairs  
Laundry service (at extra charge)  
Room furniture: bedside table, boudoir with mirror, coffee table, luggage rack, waste bin  
Safe deposit box  
Satellite TV  
Sea or garden views  
Twin/double beds  
Wi-Fi internet access 4MBPs/user (free of charge)  
Coffee & Tea making facilities with complimentary instant coffee & tea included, daily refilled  
Bottle of Water upon arrival  
Iron & Iron board upon request

### **Quadruple rooms**

Same as twin rooms +  
2 more beds (4 in total)

### **Family rooms**

Same as twin rooms +  
2 more beds (4 in total)

### **Junior suites**

Same as twin rooms +  
Sofa that can be turned into 2 beds (4 beds in total)  
Extra Air Condition  
Extra TV  
Coffee Table  
Furnished Veranda with small sofa, table & 2 chairs  
Private Pool



# MIT SIS BALI PARADISE

## Bathroom Amenities

---

Bathroom amenities (soap, shampoo, shower gel)

Hairdryer





# MIT SIS BALI PARADISE

## Food & Beverage Facilities

---

### Breakfast

Main restaurant "Panorama"

### Lunch

Main restaurant "Panorama"

### Dinner

Main restaurant "Panorama"

"Elia" à la carte restaurant, reservation required (closed on Sundays)

"Italian" a la carte restaurant, reservation required (closed on Saturdays)

### Other F&B Facilities

"Mediterraneo" Main bar

Pizza Corner

"Ocean" Pool bar

Beach Bar

### Additional F&B offerings

Anniversary, Birthday & Honeymoon packages (Essential package for free & exclusive with extra charge)

International spirits (at extra charge)

Special diet meals upon request (gluten free, lactose free, vegan etc.)

Vegetarian options at the main restaurant





## MIT SIS BALI PARADISE

### Recreation: Sports & Entertainment

---

#### Swimming

- 2 outdoor renovated swimming pools with fresh water, supervised by lifeguard
- 1 outdoor children's pool with fresh water
- 1 waterpark with 3 slides for 6 years old and up to 1,20 meters height
- Sun beds and umbrellas around the pools and the beach (free of charge)

#### Other leisure activities

- 1 daylighted tennis courts with soft surface, recently renovated
- Diving Centre (at extra charge)
- Boccia
- Table Tennis



Outdoor Gym

### For Our Little Ones – Mitsis Storyland

---

#### Children facilities

- 1 outdoor children's pool with fresh water
- Waterslide Park from 6 years old and up to 1,20 meters height
- Mitsis Storyland
- Playground

#### Infant amenities

- Baby cot (on request)
- Highchairs at all restaurants available



# MIT SIS BALI PARADISE

## Hotel Facilities & Services (A-Z)

---

Amphitheatre (outdoor)  
Beach towels  
Bilingual team  
Car rentals (at extra charge)  
Cots in the room (free of charge)  
Daily bus services to/from Heraklion - Rethymnon & Ag. Nikolaos (at extra charge)  
Florist on call  
Lifeguard by the pools and beach from 10.00 to 18.00 daily  
Outdoor parking area within the hotel premises (free of charge)  
Security 24h  
Taxi service (upon request)  
Wi-Fi dedicated internet access 4MBPs/user in all hotel areas and rooms (free of charge)  
ATM machine at the Lobby  
Wake Up service.  
Laundry service (at extra charge)  
Medical Cover- Doctor on call 24h (at extra charge)  
Reception Services 24h  
Transfers (at extra charge)  
Lifts in the main building

### **Credit cards**

American Express, Eurocard, Mastercard, Visa

Additional climate crisis resilience fees of 10€ (March-October) per room, per day, will be collected upon arrival at the check-in (subject to government policy).