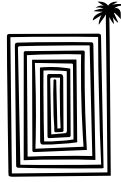


CRETE AVANT GARDE





AMIRANDES

A RESORT TO LIVE



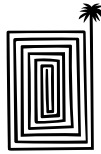
A CONTEMPORARY WATER PALACE IN CRETE.

A living tribute to Crete's legendary past, the palatial Amirandes reimagines the island's heritage with echoes of Minoan splendor and Venetian grace. A place of breathtaking beauty, subtle grandeur, and understated sophistication, Amirandes is designed not simply to impress, but to inspire.

Amirandes is a sanctuary born of myth, reimagined for the discerning voyager.

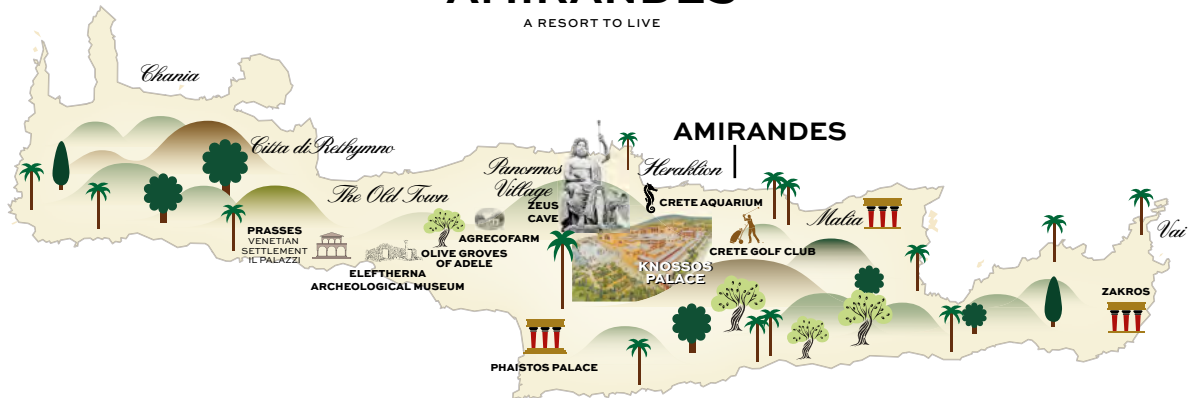


VIRTUOSO
PREFERRED



AMIRANDES

A RESORT TO LIVE



IDEAL FOR

Ideal for All ages, Luxury travelers, VIPs, couples or families

NEWS 2026

NEW OPEN 12 MONTHS YEAR-ROUND ESCAPE IN CRETE

Amirandes welcomes a new era of luxury with brand-new suites, villas, and bespoke year-round amenities. Enhance your stay with the Amirandes All-Inclusive Experience, an option that offers you the freedom to enjoy dining and drinks throughout the day.

LOCATION

18 km east of Heraklion with easy access to Heraklion's international airport and the world-famous archaeological site at the Palace of Knossos. The Crete Golf Club is also nearby • Heraklion town: 23 km • Heraklion Airport: 18 km • Chania Airport: 169 km

ACCOMMODATION

Total Rooms 204 • Rooms 147 • Bungalows 19, Suites 20 & Villas 18

BEACH & POOLS

Two coves of fine golden sand beaches.

- 1 Olympic-size Seawater Main Pool • 1 Children's Fresh water Pool
- 1 Indoor Fresh water Spa Pool (heated from October to April)

FEATURES

7 Restaurants & 2 Bars • 440 m² Elixir Alchemy Spa with Indoor pool & gym area • Grecoland kids Club & Kids Summer camp activities • Jewellery, clothing & holiday boutiques • Amphitheatre • Orthodox Greek Chapel

AWARDS

- Amirandes is named as the top pick in Crete and has been awarded a Certificate of Excellence 2023 by Trip Advisor • TUI Umwelt Champion
- TUI Top Quality 2024 • TUI Holly • Travelife Gold • Best of the best hotel AWARD by Virtuoso • Green & Fair Hotel 2023 by TUI

MEAL PLANS

Breakfast A stunning variety of choices, ranging from the lavishness of American-style buffet to the elegance of exclusive à la carte options with local delicacies. Early & Late breakfast as well as In-room breakfast services are available upon request.

Halfboard

A well-tended half board concept offering a large variety of dishes and tastes in lavish breakfast and dinner buffets or choice of hotel's à la carte restaurant with credit allowance of 20 € per adult & 10 € per child, reservation required.

NEW All Inclusive option

Elevate your stay with The All Inclusive Option. Curated dining experiences, including buffets, a la carte restaurants, and a local Dine Out. Enjoy all day unlimited drinks and light snacks, cocktails, and refreshments served poolside or on the beach. For private moments of indulgence the room amenities include a daily-replenished minibar, espresso and tea facilities.

See more at amirandes.com/all-inclusive-experience

RESTAURANTS & BARS

BREAKFAST

Amirandes, Int. Buffet Restaurant. American Gourmet Buffet with a choice of organic products and Greek Corner with traditional products and herb teas. In Room Private Breakfast. Early Continental Breakfast

LUNCH

Amirandes, Int. Buffet Restaurant. Traditional Mediterranean cuisine combined with international delicacies in the hotel's main restaurant.

Petrino, Beachfront Seafood Restaurant. Stylish, al fresco lunches at Amirandes beachfront seafood restaurant.

By the Pool, Snacks & Fresh salads

DINNER

Amirandes, Int. Buffet Restaurant.

Extensive Buffet Theme Evenings. Free of charge for guests in half board.

Xasteria, Cretan organic à la carte Restaurant

Cretan awarded à la carte Restaurant of organic products from Greccotel's own Agreco Farm. Kids' Menus available.

Blue Monkey, Asian à la carte Restaurant

Oriental delicacies cooked to order and modern twists on Eastern favorites. Kids' Menus available

Minotaur, Fine Mediterranean a la carte dining

An incomparable Italian restaurant featuring an amazing collection of genuine Picasso ceramics. Ultimate dining experience at the Amirandes Floating Deck (June to September).

Agreco Taverna, Cretan Organic Dining

Visit Agreco farm's Taverna near Rethymno, where a sumptuous six-course menu of Cretan dishes, based on the farm's organic produce.

Vegan / Vegetarian / Gluten Free options, as well as Vegan and BIO wines available in all restaurants.

BARS

Labyrinth Lagoon Bar

For a drink or a cocktail with the views of the lagoon and sea from the sunken lounges, drifting along to the serenades of the live evening music.

Sunset Lounge Selected lounge music and the most whimsical cocktails on the exclusive Amirandes beach, a unique seaside setting for delighting in the stunning sunsets over the mesmerizing Cretan skyline.



ROOM SERVICE 24h at an extra charge

NOTE: Restaurants are subject to availability and weather conditions, reservations required in all à la carte restaurants.

KIDS

Kids Go Free Children up to 12 years old enjoy free kids dining in the "Tasty Corner", free Grecoland kids' programme and outdoor creative activities.

Greco-baby, 0-3 yrs. Pre-arrival order of baby equipment, baby food order. • Baby-sitting, extra charge

Grecoland Kids Club, 4-12 yrs. 6 days per week (10.00-18.00). Children under 4 yrs. must be supervised at all times by a parent or guardian.

Greco-teens Activities

Kids Dining, 4-12 yrs. The Half Board or All Inclusive pack offers exclusively to children up to 12 years an ALL IN-Dining experience: All Day favorite snacks at Grecoland (11:00 -17:00) Tasty corner lunch at Main restaurant (12.30-14.00) A La Carte kids' dining in designated restaurants with special kid's menu including juices & refreshments or credit allowance for regular menu orders.

SPA & WELLNESS

440m² Elixir Alchemy Spa with Indoor pool & gym **Spa Facilities** • Indoor Pool • Sauna (Men & Women separate) • 6 Private Massage Rooms (5 singles + 1 double) • Beauty Salon • Changing Rooms

Revamped Fitness room Fitness room with Technogym & Cybex cardio fitness equipment including: 2 elliptical trainer, 3 Treadmills, 2 Bikes, 2 Weights benches, 1 Much fitness machine (back machine, brand: Technogym strength), Technogym weights • Fitness aerobic area

FITNESS & ACTIVITIES

GYMNASTICS

Fitness room with cardio fitness equipment, Yoga, Aqua Gym

SPORTS

5x5 Mini Soccer, Street Basketball, Beach Volley, Table Tennis, Bocchia. Extra charge: 2 floodlit Tennis courts (Astroturf) & 1 padel court, floodlit, instruction available.

Watersports: Extra charge: Watersports School, Sailing Cruises, Pedal Boats, Canoes, Kayak, Wind-Surfing, Jet-ski, Boat Safari, fishing Excursions

E-Bike Service: Includes digital tour, GPS and other in-app services (extra costs apply). NOTE: Cost depends on rental duration. The service will be available daily from 7 am - 11 pm. The rental procedure as well as the acceptance of the Terms & Conditions and the payment will be automated and completed by the guest.

PADEL Court: Lessons by professional instructor & equipment provided at extra charge.

Outside The Hotel: Extra charge: • The Crete Golf Club (10km) • Mountain Bike centre nearby (rental from hotel and servicing)

- Scuba Diving • Horse Riding & Aqua park nearby • Luxurious Yachts
- Culture and Craft Tours • Adventure activities.

EVENING ENTERTAINMENT

- Live Music every evening • Dance Shows on selected evenings • Live DJ music and a vibrant atmosphere on selected evenings • Outdoor Cinema (weather permitting) • Family Disco

MEETING FACILITIES

Spacious conference rooms with technical equipment, capacity 10 - 300 persons.

ENVIRONMENTAL POLICY

- Travelife Gold Award • ISO 14001 • Use of organic products/ produce
- Waste Water Treatment Plant • Waste and Batteries Recycling
- Energy and Water Saving Devices • Ecological Cleaning Agents
- Environmental Activities and Information for guests • Blue Flag awarded beach.

SERVICES

WiFi Free, in all hotel areas and guest rooms.

GrecoTel Mobile App proposes a world of information regarding your stay, online-reservation at the à la carte restaurants and services in and out of the hotel.

24h WhatsApp Concierge Designated staff members are at call on WhatsApp, to assist guests on everything they may desire.

Multilingual personnel English, German, Russian, French, Italian, Greek

Medical Services 24hr Medical cover, Doctor on call -extra charges may apply depending on guests' travel insurance. • Pharmacy at 2 km • Hospital at 25 km

Transport Car Rental Desk in hotel • Motor Bike Rental from reception • Bus stop at 1km

Taxi Service on request to Gouves (2km) • to Hersonissos (10km) • to Heraklion (23km) • to Heraklion Airport (18km) • to Ag. Nikolaos (46km)

VIP Luxury Transfer An exclusive, comfortable, reliable, transportation service is provided for absolute comfort of hotel guests.

Money All major Credit Cards are accepted • Nearest Bank/ATM inside the hotel

Voltage Current 220V.

Mobility Impaired Guests Due to hotel's layout most departments and rooms are not accessible for the mobility impaired guests.

Animals Dogs that weigh up to 8kg are allowed in selected villas and bungalows with private gardens only. Restrictions apply. Service animals are allowed to accompany their handler in all hotel premises. View pets' policy at grecotel.com/pets-policy.

Official Hotel Categorization Five star Resort

Contact details GR 70014, Kato Gouves, Heraklion, Crete, TEL.: (+30) 28970 41103, E-mail: reservations.am@grecotel.com



AMIRANDES RESORT MAP

1. Main Entrance
2. Reception
3. Lobby Lounge
4. Labyrinth Lounge Bar
5. Amirandes Main Restaurant
6. Minotaur Mediterranean fine dining Restaurant
7. Blue Monkey Asian Restaurant
8. Xasteria Cretan Restaurant
9. Petrino Restaurant
10. Church
11. West Beach Section
12. Conference Hall
13. Fifty-Fifty Boutique
14. Amirandes Boutique
15. Charisma Jewellery Boutique
16. Sunstores Holiday Boutique
17. Elixir Alchemy Spa
18. Indoor Fresh water Pool
19. Candia Wing
20. Individual Pools
21. Main Swimming Pool
22. Children's Swimming Pool
23. By the Pool Brasserie
24. Upper Parking Area
25. Yoga Area
26. Grecoland
27. Amphitheatre
28. Tennis Courts
29. Lagoon Wing
30. Villas
31. Sunset Building
32. Lower Parking Area
33. Mini Soccer
34. Hotel Main Gate
35. Pool Wing
36. Outdoor Gym area
37. Playground
38. Street Basketball Court
39. Padel Court
40. Seafront Yoga Area
41. Sunset Lounge Beach Bar
42. Floating Deck
43. Pool Events Area

ACCOMMODATION CHART

All room types include:

- Mini-bar with international brands
- Complimentary tea & coffee facilities
- Nespresso machine with 2 complimentary pods per adult/per day
- In-room safe
- 24h Room service
- Laundry services (extra charge)
- Luxurious beds & linens
- Hairdryer
- Bathrobes & slippers
- Deluxe bathroom amenities
- Complimentary WiFi
- LCD TV

Additionally in villas:

- Complimentary Full Set Bar in selected villas
- Complimentary Pillow Menu Service
- Daily maid service

ROOM TYPES	LOCATION	SIZE	SLEEPS	VIEW
Superior Guestroom	Candia & Lagoon Wing	31m ²	2	Sea/Garden
Luxury Guestroom	Candia & Lagoon Wing	35m ²	2 + 1	Sea/Side Sea/Garden/Lagoon
Luxury Bungalow	Front row, Garden area	33m ²	2	Garden
Superior Family Room, Garden View	Pool Wing	40m ²	3 + 1	Garden
Superior Family Room, Side Sea View	Sunset Wing	40m ²	3 + 1	Side Sea
Luxury Family Room	Candia Wing	40m ²	2 + 2	Sea/Mountain
2-Bedroom Suite	Lagoon Wing	55m ²	2 + 2, 4	Garden View
Swim up Superior with private Garden	Candia Wing	31m ²	2 + 1	Garden
Swim up Family Room with Garden	Candia Wing	40m ²	2 + 2	Garden
Swim Up 2-Bedroom Suite	Candia Wing	55m ²	2 + 2, 4	Garden View
Junior Bungalow Suite Waterfront, Private Pool	First Row, Sea front Lagoon Wing	45m ²	2 + 1	Sea View
White Suite	Lagoon Wing	75m ²	2 + 1	Sea Front
Amirandes White Suite	Lagoon Wing	95m ²	2 + 1	Sea Front
NEW Amirandes 2 bedroom White suite Seafront	Lagoon Wing	170m ²	4 + 2	Sea Front
NEW Amirandes 2 bedroom suite Seafront	Lagoon Wing	130m ²	4 + 2	Sea Front
NEW Amirandes 3 bedroom suite Seafront	Lagoon Wing	205m ²	6 + 3	Sea Front
Junior Suite Waterfront, Gym & Private Pool	Lagoon Wing	61m ²	2 + 1	Sea View
2-Bedroom Suite, Gym & Private Pool	Lagoon Wing	85m ²	4 + 1	Sea/Garden
NEW 2 Bedroom Duplex Suite	Sunset Wing	80m ²	4	Garden & Side Sea
NEW 3 Bedroom Duplex Suite	Sunset Wing	140m ²	6	Garden & Side Sea
Dream Villa with Sea View and Private Pool	Villas area	65m ²	2 + 2	Direct Sea
2 Bedroom Dream Villa with Sea View and Private Pool	Villas area	85m ²	4 + 2	Direct Sea
2 Bedroom Villa Beachfront Villa with Private Pool	Sea Front, Villas area	53m ²	4	Direct Sea
3 Bedroom Villa Beachfront with Private Pool	Seafront, Villas area	75m ²	4 + 1	Direct Sea
Junior Villa Waterfront with Private Pool (one bedroom)	Seafront, Villas area	67,5m ²	2 + 1	Direct Sea
2 Bedroom Villa Waterfront with Private Pool	Seafront, Villas area	88m ²	4	Direct Sea
2 Bedroom Infinity Villa with Private Pool	Villas area	130m ²	6	Direct Sea
4 Bedroom Villa Waterfront with Pools	Seafront, Villas area	155m ²	8	Direct Sea
Amirandes Residence Waterfront	Seafront, Villas area	311m ²	4	Direct Sea
3 Bedroom Villa Waterfront with Pools	Seafront, Villas area	378m ²	6	Direct Sea
NEW 6 Bedroom Waterfront Villa Complex with Pools	Villas Area	534m ²	12+2	Direct Sea

ACCOMMODATION LAYOUTS & PHOTOS ARE SAMPLES AND MAY VARY DEPENDING ON THE POSITION WITHIN THE HOTEL. MEASUREMENTS ARE APPROXIMATE TO THE NEAREST m²

View more details & photos about facilities, services & room details online at amirandes.com



SUPERIOR ROOM

Location: Candia & Lagoon Wings, floors 1st & 2nd
View: Sea/Garden View
Size: Indoor: 31 sq.m., outdoor: 5.5 sq.m.
Layout: Open plan
Sleeps: 2
Beds: King size bed or Twins
Bath: Shower cubicle, bath and a wash basin with vanity unit



Type 1



Type 2



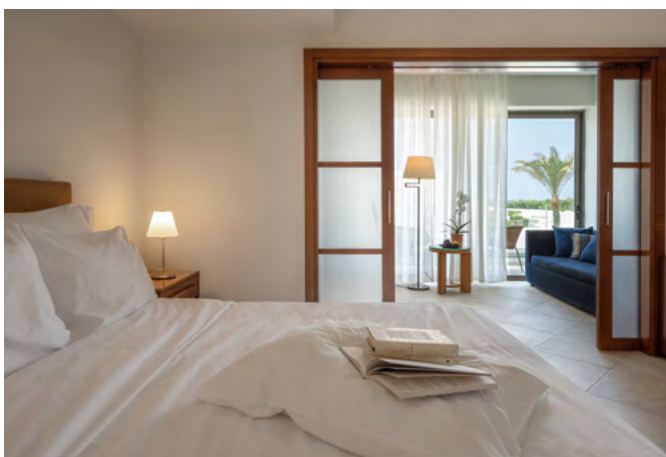
LUXURY GUESTROOM

Location: Candia & Lagoon Wings, floors 1st & 2nd
View: Sea, Side Sea, Garden or Lagoon View
Size: Indoor: 35 sq.m., outdoor: 6 sq.m.
Layout: Open plan with sitting area
Sleeps: 2 adults + 1 child
Beds: King size bed or Twins
Bath: One wash basin, bathtub with waterfall lighting & shower cubicle



LUXURY BUNGALOW FRONT ROW

Location: Garden Area, Ground floor only
View: Garden View
Size: Indoor: 33 sq.m., outdoor: 35 sq.m.
Layout: Open plan
Sleeps: 2 adults
Beds: King size bed or Twins
Bath: Spacious designer bathroom with two separate noir, marble wash basins, impressive bathtub centered in the room facing the sea & shower cubicle
Specials: Terrace with furnished sitting area, sunbeds & umbrella



SUPERIOR FAMILY ROOM GARDEN VIEW

Location: Pool Wing, ground floor with terrace **View:** Garden View
Size: Indoor: 40 sq.m., outdoor: 5.5 sq.m. **Layout:** Master bedroom & separate living area ideal for children, separated by sliding doors **Sleeps:** 3 Adults + 1 Child **Beds:** 1 king size bed & 2 sofa beds **Bath:** One bathroom
Specials: Terrace with furnished sitting area, sunbeds & umbrella





SUPERIOR FAMILY ROOM

SIDE SEA VIEW

Location: At Sunset Wing, 2nd floor

View: Side Sea

Size: Indoor: 40 sq.m.,
outdoor: 5.5 sq.m.

Layout: Master bedroom
& separate living area ideal
for children, separated by
sliding doors

Sleeps: 3 Adults + 1 Child

Beds: 1 king size bed & 2
sofa beds

Bath: One bathroom



Type 1



Type 2



LUXURY FAMILY ROOM

SEA OR MOUNTAIN VIEW

Location: Candia Wing, 1st floor with balcony or 2nd floor
with balcony

View: Sea or Garden View

Size: Indoor: 40 sq.m./
outdoor: 6 sq.m.

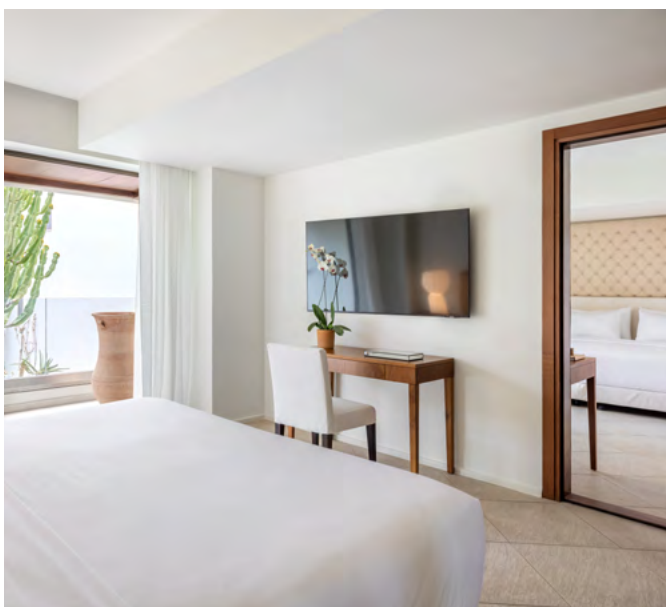
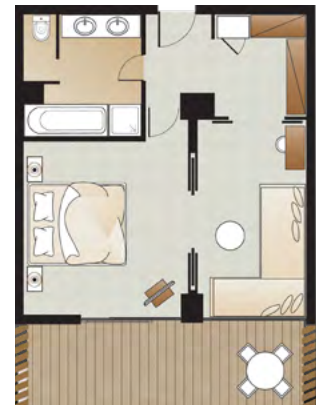
Layout: Master bedroom &
separate living area ideal for
children, separated by sliding
doors

Sleeps: 2 adults + 2 children

Beds: King size bed and 2 sofa beds

Bath: Shower cubicle, bathtub,
WC and double washbasin vanity
unit

Specials: Walk-in dressing area



2-BEDROOM SUITE

Location: Lagoon Wing

View: Garden

Size: 55m²

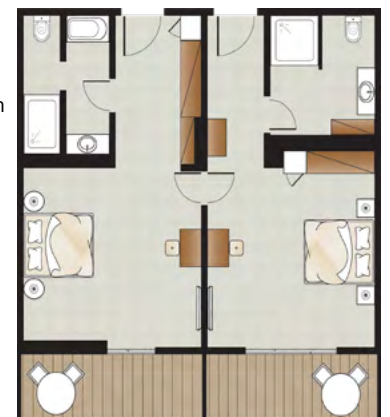
Layout: 2 Open plan Guestrooms

Sleeps: 2 adults + 2 children
or 4 adults

Beds: 2 King size beds

Bath: 2 bathrooms. One with
wash basin & shower cubicle
and one with wash basin,
bathtub and shower cubicle.

Specials: Spacious
accommodation, ideal for
families with two children
offering amazing views to
Amirandes' Cretan gardens.





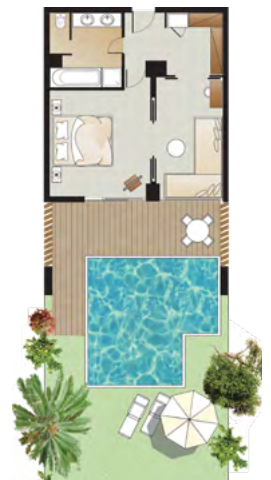
SWIM UP SUPERIOR WITH PRIVATE GARDEN

Location: Candia Wing, Ground Floor
View: Garden View
Size: Indoor: 31 sq.m., outdoor: 72 sq.m.
Layout: Open plan with sitting area
Sleeps: 2 adults +1 child
Beds: King size bed or twins
Bath: Shower cubicle, bathtub, WC and washbasin vanity unit
Pool: Private swimming pool 15-19 sq.m.



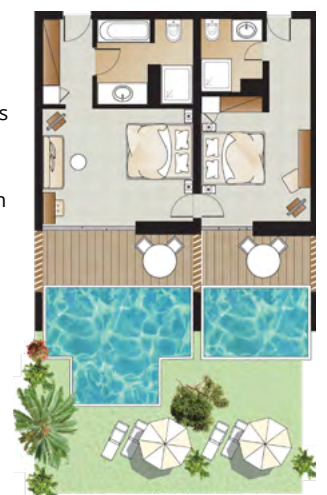
SWIM UP FAMILY ROOM WITH GARDEN

Location: Candia Wing, Ground floor with terrace
View: Garden View
Size: Indoor: 40 sq.m., outdoor: 72 sq.m.
Layout: Master bedroom & separate living area ideal for children, separated by sliding doors
Sleeps: 2 adults + 2 children
Beds: King size bed and 2 sofa beds
Bath: Shower cubicle, bathtub, WC and double washbasin vanity unit
Pool: 21-23 sq.m. with garden (not heated)
Specials: Shaded terrace with furnished sitting & dining area and direct access to the pool. Wooden deck allowing access to a spacious garden furnished with sunbeds & umbrella



SWIM UP 2-BEDROOM SUITE

Location: Candia Wing
View: Garden
Size: 55m²
Layout: 2 Open plan Guestrooms with sitting area
Sleeps: 2 adults + 2 children or 4 adults
Beds: 2 King size beds or twins
Bath: 2 bathrooms. One with wash basin & shower cubicle and one with wash basin, bathtub and shower cubicle.
Pool: 2 pools 15-19m²
Specials: Ample space with the comforts and amenities that set the standard at AmiranDES and the added bonus of two private pools and a terrace cradled by lush greenery.





WHITE SUITE

Location: Sea Front, Amirandes Lagoon Wing, 1st or 2nd floor

View: Sea Front View

Size: Indoor: 75 sq.m.

Layout: Open plan

Sleeps: 2 adults + 1 child

Beds: King size bed with direct sea views

Bath: Luxurious designed bathroom with an open sea view bathtub, two wash basins & shower cubicle

Specials: Sizable wardrobe. Sliding glass balcony doors transforming the suite into a huge balcony. Nespresso Machine. Pillow menu.



AMIRANDES WHITE SUITE

Location: Sea Front, Lagoon Wing, 1st Floor & 2nd floor

View: Sea Front View

Size: Indoor: 95 sq.m.

Layout: Open plan

Sleeps: 2 adults + 1 child

Beds: King size bed next to the balcony door, enabling a magnificent view of the sea and extra sofa bed

Bath: Luxurious designed en suite bathroom with an open sea view bathtub, two wash basins & shower cubicle.

Specials: White floor. Sliding glass balcony doors transforming the suite into a huge balcony, Walk-in wardrobe. Nespresso Machine. Pillow menu.



NEW AMIRANDES 2 BEDROOM WHITE SUITE

Location: On the Sea Front, Lagoon Wing, 1st or 2nd floor

View: Sea front

Size: 170m² indoor

Layout: Two separate open plan suites

Sleeps: 4 Adults & 2 Children

Beds: 2 king size beds & 2 extra single beds

Bath: Two bathrooms

Specials: Sliding glass doors transforming the suite into a huge balcony, Walk-in wardrobe.





NEW AMIRANDES 2 BEDROOM SUITE

Location: On the Sea Front, Lagoon Wing, 1st or 2nd floor

View: Sea front

Size: 130m² indoor, 6m² outdoor

Layout: Two separate open plan areas

Sleeps: 4 Adults & 2 Children

Beds: 1 king size bed, 1 double bed, 1 sofa bed & 1 extra single bed

Bath: Two bathrooms

Specials: Sliding glass doors transforming the suite into a huge balcony, Walk-in wardrobe.



NEW AMIRANDES 3 BEDROOM SUITE

Location: On the Sea Front, Lagoon Wing, 1st or 2nd floor

View: Sea front

Size: 205m² indoor

Layout: Three separate open plan areas

Sleeps: 6 Adults & 3 Children

Beds: 2 king size beds, 1 double bed, 1 sofa bed & 2 extra single beds

Bath: Three bathrooms

Specials: Sliding glass doors transforming the suite into a huge balcony, Walk-in wardrobe.



JUNIOR BUNGALOW SUITE WATERFRONT PRIVATE POOL

Location: First Row Lagoon Wing, Ground Floor

View: Sea Front View

Size: Indoor: 45 sq.m., outdoor: 30 sq.m.

Layout: Open plan Sleeps: 2 adults + 1 child

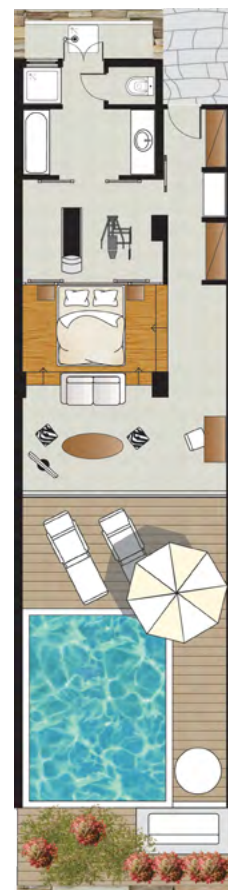
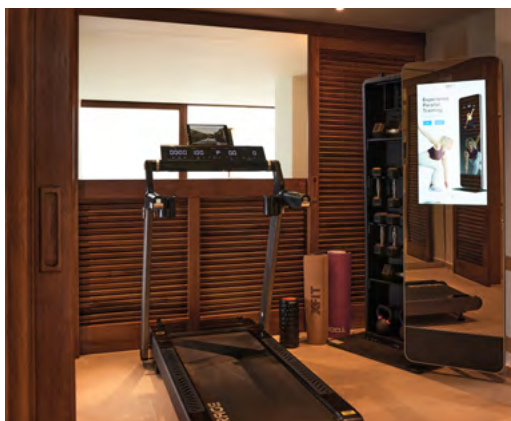
Beds: King size bed and extra sofa bed

Bath: Spacious bathroom with two wash basins, hydromassage bathtub, shower cubicle & en-suite wardrobe

Pool: Private pool 16m², heated up to 25°C upon request with extra charge (90€ per day)

Specials: Private shaded terrace with outdoor lounge. Nespresso Machine





JUNIOR SUITE WATERFORNT

GYM & PRIVATE POOL

Location: Lagoon Wing, Ground Floor

View: Sea View

Size: Indoor: 61 sq.m., outdoor: 45,5 sq.m.

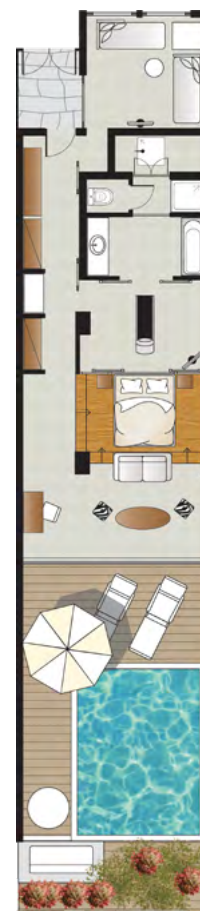
Layout: Open plan

Sleeps: 2 adults + 1 child Beds: Raised King size bed and extra bed

Bath: 24 sq.m. with a bathtub, washbasin with vanity unit, separate shower cabin, WC and a gym area with exercise equipment and LCD TV

Pool: Private pool 18m², heated up to 25°C upon request with extra charge (90€ per day)

Specials: Gym area with exercise equipment. Outdoor rain shower. Pillow menu. Nespresso Machine.



2-BEDROOM SUITE

GYM & PRIVATE POOL

Location: Lagoon Wing, Ground Floor

View: Direct Sea View & Garden View

Size: Indoor: 85 sq.m., outdoor: 50 sq.m.

Layout: Open plan master bedroom & separate living area ideal for children

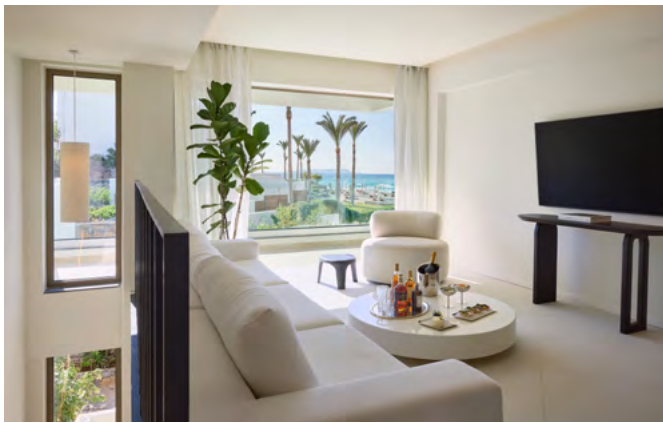
Sleeps: 4 adults + 1 child

Beds: Raised King size bed and 2 extra beds

Bath: 24 sq.m. with a bathtub, washbasin with vanity unit, separate shower cabin, WC and a gym area with exercise equipment and LCD TV

Pool: Private pool 18m², heated up to 25°C upon request with extra charge (90€ per day)

Specials: Gym area with exercise equipment. Large terrace with direct access to the pool. Outdoor rain shower. Pillow menu. Nespresso Machine



NEW 2 BEDROOM DUPLEX SUITE

Location: At Sunset Wing

View: Hotel's colorful gardens and Side Sea

Size: 80m² indoor, 5.5m² outdoor

Layout: Maisonette. One Master Bedroom & separate living / bedroom area, ideal for children

Sleeps: 4 adults

Beds: 1 king size bed & 2 sofa beds

Bath: Two bathrooms



Upper floor



Ground floor



NEW 3 BEDROOM DUPLEX SUITE

Location: At Sunset Wing

View: Hotel's colorful gardens and Side Sea

Size: 140m² indoor, 30m² outdoor

Layout: Maisonette. Two Master bedrooms, 1 separate living / bedroom area, 1 living room & 1 kitchenette.

Sleeps: 6 Adults

Beds: 3 king size beds

Bath: Three bathrooms

Ground floor



Upper floor





2-BEDROOM DREAM VILLA WITH SEA VIEW & PRIVATE POOL

Location: In the exclusive Villa Area, Ground & 1st Floor

View: Direct Sea View

Size: Indoor: 85 sq.m., outdoor: 50 sq.m.

Layout: 2floor residence. Ground floor: spacious living area which can be converted to a bedroom for 2 children & stylish second bedroom with 2 single beds. 1st Floor: King size master bedroom facing the sea & luxurious bathroom

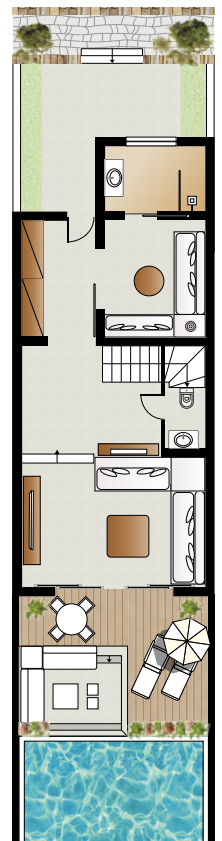
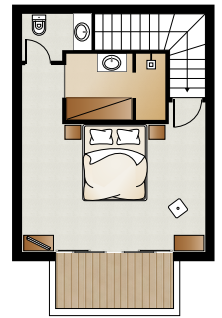
Sleeps: 4 adults + 2 children

Beds: King size bed and 2 sofa beds and 2 sofa beds

Bath: 3 bathrooms. One on the ground floor with wash basin & shower cubicle, another one on the ground floor with wash basin and wc and one on the 1st floor with dressing area, basin and a shower cubicle.

Pool: Infinity private pool 15m², heated up to 25°C upon request with extra charge (90€ per day)

Specials: Private terrace/Sun deck with a sunken lounge and dining area, sunbeds, umbrella & private sea view balcony. Pillow menu. Nespresso Machine. Private yard entrance with landscaped garden. Decorative fountain (in some villas).





DREAM VILLA

WITH SEA VIEW AND PRIVATE POOL

Location: In the exclusive Villa Area, Ground & 1st Floor

View: Direct Sea View

Size: Indoor: 65 sq.m., outdoor: 67 sq.m.

Layout: 2floor residence. Ground floor: entrance hall with a spacious living area which can be converted to a bedroom for 2 children. 1st Floor: King size master bedroom facing the sea & luxurious bathroom

Sleeps: 2 adults + 2 children

Beds: King size bed and 2 sofa beds

Bath: 2 bathrooms. One on the ground floor with wash basin & shower cubicle and one on the 1st floor with dressing area, basin and shower cubicle.

Pool: Infinity private pool 15m², heated up to 25°C upon request with extra charge (90€ per day)

Specials: Private terrace/Sun deck with a sunken lounge and dining area, sunbeds, umbrella & private sea view balcony. Pillow menu. Nespresso Machine. Private entrance with landscaped courtyard. Decorative fountain (in some villas).





3 BEDROOM VILLA BEACH FRONT

WITH PRIVATE POOL

Location: In the exclusive Villa Area, Ground Floor

View: Direct Sea View

Size: Indoor: 75 sq.m., outdoor: 40-90 sq.m.

Layout: Two separate double bedrooms & 1 living area with a sofa bed which doubles as an extra sleeping area. The living area leads to the second bedroom through a landscaped open-air courtyard

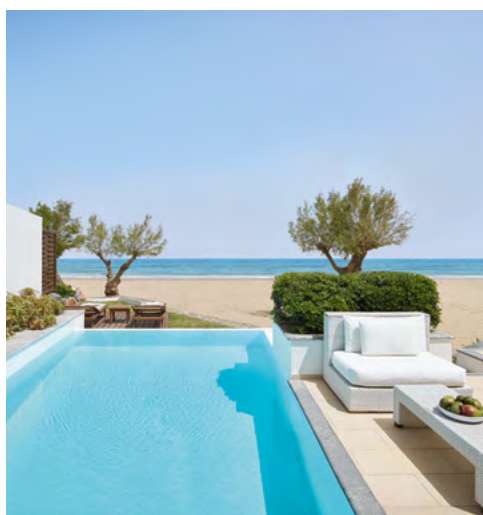
Sleeps: 4 adults + 1 child

Beds: 1 King size bed, 2 single beds and an extra sofa bed

Bath: 2 bathrooms. One luxurious sea view bathroom with a double stone basin, hydromassage bathtub with views to the sea and to the private pool, separate shower. One bathroom with noir washbasin & separate shower cabin

Pool: Infinity private pool 17-18m², heated up to 25°C upon request with extra charge (90€ per day) with smooth current for exercising (upon request)

Specials: Private veranda with comfortable furniture in the terrace, sunbeds & umbrella. Landscaped garden with direct access to the west Beach area. Nespresso Machine. Pillow menu.





2 BEDROOM VILLA BEACHFRONT WITH PRIVATE POOL

Location: In the exclusive Villa Area, Ground Floor

View: Direct Sea View,

Size: Indoor: 53 sq.m., outdoor: 40-90 sq.m.

Layout: Two separate double bedrooms

Sleeps: 4 adults

Beds: 1 King size bed, 2 single beds

Bath: 2 bathrooms. One luxurious sea view bathroom with a double stone basin, hydromassage bathtub with views to the sea and to the private pool, separate shower. One bathroom that leads to a landscaped courtyard with noir washbasin & separate shower cabin.

Pool: Infinity private pool 17-18m², heated up to 25°C upon request with extra charge (90€ per day) with smooth current for exercising (upon request)

Specials: Private veranda with comfortable furniture in the terrace, sunbeds & umbrella. Landscaped garden with direct access to the west Beach area. Nespresso Machine. Pillow menu.





2 BEDROOM INFINITY VILLA WITH PRIVATE POOL

Location: In the exclusive Villa Area, Ground & 1st Floor

View: Direct Sea View

Size: Indoor: 130 sq.m., outdoor: 250 sq.m.

Layout: Two levels residence. Ground floor: an entrance hall, a comfortable living room & a master bedroom with walk in wardrobe & en suite bathroom. Upper floor: stylish lounge suite & sleeping quarters.

Sleeps: 4 adults + 2 children

Beds: 1 king size bed set against a theatrical backdrop of coloured lanterns & 1 oversized king size bed in the upper floor bedroom

Bath: Ground floor: 1 luxurious en suite bathroom with hydromassage bathtub, 1 wash basin & hydromassage shower. Upper floor: 1 bathroom with a free standing & deep soaking bathtub in the centre of the room with sea and garden views, 2 stone washbasins & hydro massage shower

Pool: Private pool 30 sq.m., heated up to 25°C upon request with extra charge (90€ per day) with a day bed, an infinity pool where the evening lightning of the pool gives an outstanding feeling of romance.

Specials: Iron gates leading to a grand entrance with palm and fruit trees. Decorative fountain. Private parking area with 1 Parking space. Private veranda with dining and relaxing furniture in the terrace, sunbeds & umbrella. Outdoor day bed for two in the centre. Nespresso Machine. Outdoor rain shower. Pillow menu.





JUNIOR VILLA WATERFRONT WITH PRIVATE POOL

Location: 1-st row in the exclusive Villa Area, Ground Floor

View: Direct Sea View

Size: Indoor: 67,5 sq.m., outdoor: 52,5 sq.m.

Layout: 1 sea view master bedroom & a stylish living room

Sleeps: 2 adults + 1 child

Beds: 1 oversized King size bed set against a theatrical backdrop of traditional mini pots with direct sea view and with direct access to the pool

Bath: One luxurious en suite bathroom with an overflowing deep soaking hydromassage bathtub with aromatherapy and color therapy, 2 wash basins & a separate rain shower cabin. Two glass doors in the bathroom provide access to an outdoor landscaped area.

Pool: Private pool 23m², heated up to 25°C upon request with extra charge (90€ per day) with smooth current for exercising (upon request).

Specials: Private veranda with comfortable furniture in the terrace, romantic love seat in the garden, sunbeds & umbrella. Landscaped garden with direct access to the west Beach area. Pillow menu. Nespresso Machine





2 BEDROOM VILLA WATERFRONT WITH PRIVATE POOL

Location: 1-st row in the exclusive Villa Area, Ground Floor

View: Direct Sea View

Size: Indoor: 88 sq.m., outdoor: 52-60 sq.m.

Layout: 2 bedrooms, an entrance hall & a luxurious living room

Sleeps: 4 adults

Beds: 1 oversized King size bed sea view with direct access to the private infinity pool & 2 single beds in the secondary room that leads to an outdoor landscaped yard

Bath: One luxurious en suite bathroom with a hydromassage bathtub, 2 wash basins & a separate rain shower glass cabin. One bathroom with 1 washbasin & separate shower cabin.

Pool: Private pool 23m², heated up to 25°C upon request with extra charge (90€ per day) with smooth current for exercising (upon request)

Specials: Private veranda with comfortable furniture in the terrace, dining area, sunbeds & umbrella. Landscaped garden with direct access to the west Beach area. Pillow menu. Nespresso Machine.





4 BEDROOM VILLA WATERFRONT WITH POOLS

Location: 1-st row in the exclusive Villa Area, Ground Floor

View: Direct Sea View

Size: Indoor: 155 sq.m., outdoor: 150 sq.m.

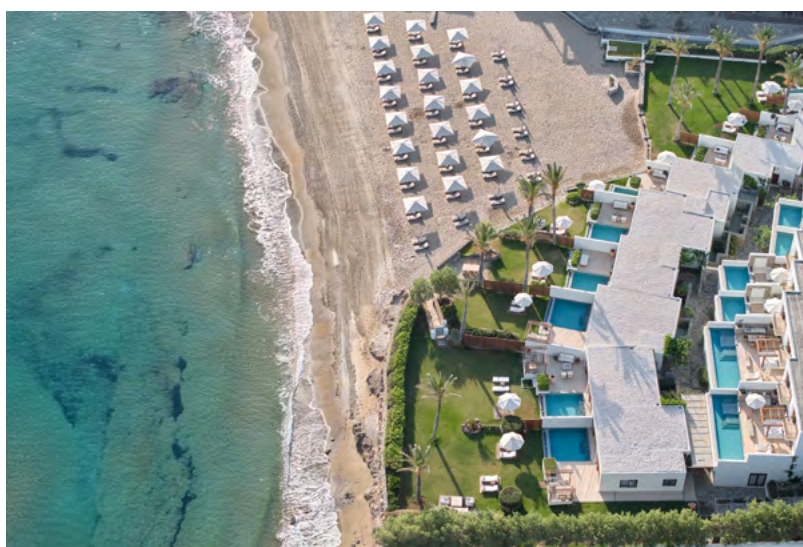
Layout: 4 bedrooms, 4 bathrooms, entrance hall, luxurious living room & living area
Sleeps: 8 adults

Beds: 1 king size bed set against a theatrical backdrop of coloured lanterns, 1 king size bed & 4 Single Beds.

Bath: One luxurious en suite bathroom with a hydromassage bathtub, 2 wash basins & a separate glass rain shower cabin. Second bathroom with 1 washbasin & separate shower cabin. Third luxurious sea view bathroom with a double stone washbasin, hydromassage bathtub, separate shower. Fourth bathroom with a noir washbasin & separate shower.

Pools: One private pool 23m² & one infinity private pool 17m², both with smooth current for exercising (upon request). Both pools are heated up to 25°C upon request with extra charge (90€ per day).

Specials: Private veranda with comfortable furniture in the terrace, dining area sunbeds & umbrella. Landscaped gardens with direct access to the west Beach area. Pillow menu. Nespresso machine.





AMIRANDES RESIDENCE WATERFRONT

Location: 1-st row in the exclusive Villa Area, Ground Floor

View: Direct Sea View

Size: Indoor: 311 sq.m., outdoor: 750 sq.m.

Layout: 1 level, 1 unit and a cave: 1 front open-plan area & an extravagant private "Cave" with stone laid floor and stone walls, spacious stylish living room with a big flat TV, dining area with handmade Italian wooden dining table, a fully equipped kitchen.

Sleeps: 4 adults

Beds: 1 oversized king size bed and 1 king size bed on a raised wooden floor

Bath: One luxurious en suite bathroom with hydromassage bathtub, 2 wash basins & a separate glass rain shower cabin. Second bathroom with two stone washbasins, separate shower, a round sized hydromassage bathtub, shower, private sauna, massage bed & exercise machine.

Pools: Private pool 23m², heated up to 25°C upon request with extra charge (90€ per day) with smooth current for exercising (upon request).

Specials: Private terrace with seating arrangements, and a large garden, hanging over the sea with direct access to the West Beach area. Furnished with sun beds, umbrella, a Pavilion, an open-air lounge & an outdoor special dining area. Private entrance. Parking space. One 65" flat screen TV in one bedroom, another 65" flat screen TV in the living room and one 14" TV in the wellness area. Round hydromassage bathtub. Private sauna. Exercise machine. Massage bed. Fully equipped Kitchen. Staff quarters. Nespresso machine. Pillow menu.





3 BEDROOM VILLA WATERFRONT WITH POOLS

Location: 1-st row in the exclusive Villa Area, Ground Floor

View: Direct Sea View **Size:** Indoor: 378 sq.m., outdoor: 802 sq.m.

Layout: 1 level, 2 units and a cave: 1 front open-plan area & an extravagant private "Cave" with stone laid floor and stone walls, spacious stylish living room with a big flat TV, dining area with handmade Italian wooden dining table, a fully equipped kitchen.

Sleeps: 6 adults

Beds: 1 King size bed set against a theatrical backdrop of coloured lanterns with direct sea view and with direct access to the pool, 1 king size bed and 1 oversized king size bed on a raised wooden floor

Bath: One luxurious en suite bathroom with an overflowing deep soaking hydromassage bathtub and colour therapy, 2 wash basins & a separate rain shower cabin. Second bathroom with two stone washbasins, separate shower, private sauna, massage bed & exercise machine. Third luxurious en suite bathroom with a hydromassage bathtub, 2 wash basins & a separate glass rain shower cabin.

Pools: 2 private pools 23m², heated up to 25°C upon request with extra charge (90€ per day), one with smooth current for exercising (upon request).

Specials: Private terrace with seating arrangements, and a large garden, hanging over the sea with direct access to the west Beach area. Furnished with sun beds, umbrella, a Pavilion, an open-air lounge & an outdoor special dining area. Private entrance. Parking space. One 65" flat screen TV in one bedroom, another 65" flat screen TV in the living room and one 14" TV in the wellness area. The third unit has also a 65" flat screen TV in the bedroom. Round hydromassage bathtub. Private sauna. Exercise Machine. Massage bed. Fully equipped Kitchen. Nespresso machine. Staff quarters. Pillow menu.





NEW 6 BEDROOM WATERFRONT VILLA COMPLEX WITH POOLS

Location: At 1st row in the exclusive Villas Area, Ground Floor

View: Cretan Sea

Size: 534m² indoor, 915m² outdoor

Layout: 1 level, separate units and a cave

Sleeps: 12 Adults & 2 Children

Beds: 5 king-size beds, 4 single beds & 2 extra single beds

Bath: Six bathrooms

Pools: 4 Private pools 23m², heated up to 25°C upon request with extra charge (90€ per day), with smooth current for exercising (upon request)

Specials: Fully equipped kitchen, 65" flat screen TV in the living room and 65" flat screen TV in the second bedroom and another 4 flat screen TVs between 55" and 65" in the other connected parts of the complex. Private entrances, Parking space, Private terraces with seating arrangements and a large garden, Staff quarters, Massage bed. Landscaped garden with direct access to the beach area.

